

MIHA State Championship Logo Contest



Congratulations to the MIHA 2007 State Logo contest winner Terra Hartley!

"Hello, I am a Junior at Standish-Sterling Central High School. I am involved in PALS (peer assistant leader) and I enjoy helping young kids! In the future I hope to pursue a career in teaching. I love playing Volleyball and competing on the SSC-ET (Standish-Sterling Central-Equestrian Team). With the recent change in sport seasons for high school athletes (that has made me extremely busy) as I am currently competing in both sports. It has been a challenge, but with the support of my coaches and family I am able to continue on with both.

I am very thankful for all the people who support my activities, and I am really excited about winning the MIHA State Championship Logo contest! Competing in equestrian activities has taught me a lot about people and animals and how to get along with both. The Michigan Interscholastic Horsemanship Association is a great experience and I would like to wish all Teams "Good Luck" at the State Championship Show, especially SSC!"



State Championship Logo Contest Rules

Who can enter? Any MIHA registered rider.

What is the deadline? All entries must be submitted to State Show Chairperson by August 1st, 2008.

What is the prize? Recognition at the 2008 state championship show. Logo will be represented on the 2008 state championship apparel. Winner's name and school will be listed on the MIHA website. Photo opportunity at the state championships.

How are the entries submitted? All logos should be submitted via email or postmarked by August 1st, 2008. Make sure that "MIHA State Championship Logo Contest" is typed into the subject line

Logo Design Specifications

Theme: All entries must pertain to the subject of horsemanship.

File Format: all entries that are emailed must be in .JPG or .GIF format.

Colors: for cost effectiveness limit of 2 colors per design.

Resolution: Submit all email entries in both (1) low resolution no larger than 150 x 150 pixels and (2) Hi-resolution no larger than 300 x 300 pixels

Identification Information: All entries must be accompanied with the following: name, address, school, grade, and age.

Limit of Entries: there is no limit of the amount of entries you send in.

Usage: Winning logo will be used on the MIHA website as well as various printed items.

Questions or more information: State Show Chairperson or Rules Chairperson

Regional logo design by Kim Kitchel

*Thank you for your commitment
and years of service to the MIHA!*



MIHA thanks Quebecor World Midland for printing the
2007 MIHA State Championship Program!

33rd Annual

1974-2007



October 11 – 14, 2007

Midland County Fairgrounds
Midland, Michigan

2007 MIHA State Championship Show Evaluation

Please take a minute to complete and turn in this evaluation form. Please circle your response with 5 being the best and most satisfactory, and 1 being the worst and least satisfactory.

1) How did you like attending the Championships in Midland, Michigan?

5 4 3 2 1

2) Overall quality of Midland County Fairgrounds?

5 4 3 2 1

3) Overall quality of the camping facilities at the Midland County Fairgrounds?

5 4 3 2 1

4) The efficiency of the Office and Show staff?

5 4 3 2 1 or did not deal with show office/staff

5) How friendly and polite was the Office and Show Staff?

5 4 3 2 1 or did not deal with show office/staff

6) How would you rate the show schedule?

5 4 3 2 1

7) If you or your team filed any formal protest, how well did the show committee handle you protest?

5 4 3 2 1 or did not file any protest

8) How timely was the show run each day?

Thursday	5	4	3	2	1
Friday	5	4	3	2	1
Saturday	5	4	3	2	1
Sunday	5	4	3	2	1

9) How do you rate this year's State Championships overall?

5 4 3 2 1

10) Would you like to see more or less vendors? (i.e. tack & clothing stores)

Circle One: More Less

11) Would you like to see more or less carnival type vendors: (i.e. food wagons and speciality wagons)

Circle One: More Less

12) Is there anything you would like to see changed for next years Championships?

ADDITIONAL COMMENTS: _____

2007 MIHA Officers

State Chairperson

Larry Flanary
6421 Clyde Rd.
Howell MI, 48855
(517) 404-3108 (Phone)
rande@cac.net (Email)

Vice Chairperson

Chris Cook
580 West Unadilla Street
Pinckney, MI 48169
(810) 599-2191 (Phone)
ccook7634@sbcglobal.net (Email)

Vice Chairperson

David Kuyers
2487 24th Ave.
Hudsonville, MI 49426
(616) 896-9132 (Phone)
(616) 797-0870 (Fax)
djkuysers@chartermi.net (Email)

Secretary

Shelly Armstrong
685 South Irelan Lane
Midland, MI 48640
(989) 631-4740 (Home)
(989) 708-6683 (Cell)
shell3131@yahoo.com (Email)

Rules Chairperson

Lynn Rich
9500 Trinkle Road
Dexter, Michigan 48130
(734) 426-2320 (Home)
(734) 846-5689 (Cell)
lrich78021@aol.com (Email)

Treasurer

Chene Godsey
29240 Philadelphia Drive
Chesterfield, MI 48051
(586) 749-6569 (Home)
(586) 201-3868 (Cell)
(734) 632-9453 (Fax)
cwgodsey@comcast.net (Email)

State Show Chairperson

Amy Husted
3102 E. Hibbard Rd.
Corunna, MI 48817
(989) 743-4708 (Phone)
(989) 743-5190 (Fax)
Hustedtec2@aol.com (Email)



WELCOME

Welcome to the Michigan Interscholastic Horsemanship Association's 2007 State Championship! We would like to congratulate all of the teams and riders competing this year. Not only were you District champs, but you were also tops at your Regional competitions.

We have made some changes to our show schedule, which we think will help make things run smoother. We have placed all Fitting & Showing on one day, so the poor horses won't have to freeze to death with multiple baths if the weather is bad. We placed the bareback classes opposite the saddle classes for the same seat, so there will be less outfit and tack changes. We have added a set crew to set courses, instead of having volunteers from the teams set the patterns.

Getting any horse show to run smoothly can be a challenge, so we ask for your patience if we hit a few bumps along the way. Please remember that this organization is run entirely by volunteers. We will try our best to be polite and respectful to you, and ask that you treat our show staff equally well. Please read the "Code of Conduct" found on page 4. Also, please follow the Midland County Fairground Rules listed on page 8.

On page 5, you will find a tentative show schedule. We say tentative because it is subject to change at any moment. Our plan is to start the show at 8:00 a.m. and continue as scheduled through the classes listed for that day. However, certain factors may speed up or slow down the start times for some of the classes. We ask for your cooperation as we try to keep the show moving.

Your thoughts and concerns are important to us! Please take a few moments to fill out and turn in the show evaluation form found in the back of this program. Please do not hesitate to contact our Executive Board members to give us your feed back directly.

We look forward to a great competition! We wish all of our teams and riders good luck!



2007 MIHA State Championship Show Staff

MIHA Chairman Larry Flanary
 State Show Chair Amy Husted
 Assistant Show Chair Chris Cook
 Office Managers Kristy Stecker, Annette Thelen
 Office Staff Shelly Armstrong, Lorrie Flanary, Chene Godsey
 Rules Chair Lynn Rich
 Score Keeper Phil Kuyers
 Judging Manager David Kuyers
 Ring Stewards Steve & Josh Edwards, Suzie Flanary
 Paddock Masters Kim Merwin, Adela Lark
 Announcer (Main Arena) Tiffany Spedowski
 Announcer (2nd Arena) Patty Yantz
 Communications Mike Yantz
 Set Crew Amy Husted, Todd Visga, Chris Cook, Mike Yantz
 Pre-Show Prep Amy Husted, Larry Flanary, Chris Cook, Cindy Tesolin

All regions will share gate duty.

Region A	Friday, Indoor arena all day	Region D	Saturday, Outdoor arena all day.
Region B	Friday, Outdoor all day.	Region E	Sunday, Indoor arena all day.
Region C	Saturday, Indoor arena all day.	Region F	Thursday, Outdoor arena all day

THANK YOU TO DISTRICT ONE AND DISTRICT SIX FOR PROVIDING ALL OF THE SHOW EQUIPMENT. YOUR SERVICE IS GREATLY APPRECIATED!

Show Service Providers

EMT Mike Yantz	Catering Carousel Catering
Veterinarian Dr. Robert Renton	Golf Carts Titan Golf Carts
Farrier Brent Hewitt	Printer Quebecor World
Judge Transportation Lou LaRichie	

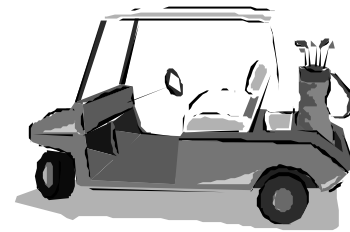
State Show Vendors

(All vendors are located inside the SWINE Building)

Lister's Garments	Sliding S Ranch Tack
Rick's Tack & Supply	Shepherd Studios Photography

2007 MIHA State Championship Judges

Jim Brown Georgetown, KY	Gary Nickerson Stockton, IA
Jody LaSalle Venetia, PA	Connie Cole O'Brien Winnemucca, NV
Robin Miller Valley City, OH	Angela B. O'Neil Raymore, MO



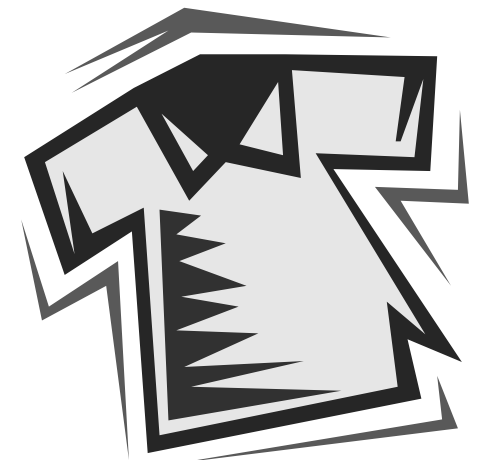
The MIHA thanks

Titan Golf Car

203 N Huron Rd
 Linwood, MI 48634
 (989) 697-3080

for being a sponsor of the 2007
MIHA State Championship!

To purchase 2007 MIHA
 State Championship Apparel
 come see Jim Lister in the
SWINE building.



Thank You to



**for your accommodations for
 MIHA's State Championships!**

2100 W. Wackerly St., Midland, MI, US, 48640
 Tel: (989) 837-1010 Fax: (989) 837-2470



Thanks to District XIII's coaches, riders, and volunteers for a great season



Congratulations to our district champs and good luck Tawas, Standish-Sterling, and Skeels-Christian at State Championships.



History of the MIHA

Since you are at the 2007 MIHA State Championships, you probably know all about the MIHA as it exists today. But we thought you might like to read about how the MIHA got started. The early days of the MIHA are blurry because no official records exist. However, here is what the historian committee was able to uncover.

In 1968, a group of parents were involved in an equine census around the same time. After realizing that there were over 10,000 horses in Oakland County, Ed Chezy, Kelly Lawrance, and Carmi Edwards purposed a school sponsored horsemanship program to the Huron Valley School Board. The School Board recommended holding a horse show to determine to extent of interest in a horsemanship program.

In 1972, a horsemanship committee was formed and the first ever "Father's Day Show" was held. A portable arena and P.A. system were used to hold the show in front of the Milford High School. The show was so successful that it brought in 1,200 spectators, 600 entries, and a profit of \$1,700. This success justified establishing an educational horsemanship program. Ed Cheyz, Kelly Lawrence, and Jerry Fuller presented a proposal to the Board of Education. At the same time, the Director of Community Schools, Carmi Edwards, and the horsemanship committee requested that the Board of Education designate 20 acres of land adjoining Milford High School to be used for the horsemanship program, the annual horse show, and the interscholastic equestrian team program. The horsemanship program passed.

The first equestrian team competition was held in the fall of 1973 at the Bogie Lake Country Club indoor facility between 5 schools – Hartland, Howell, Holly, Fenton, and Milford, with 30 to 40 riders competing. No one remembers the outcome. They only remember that it was so much fun, they just had to do it again. Meets were held again in the spring of 1974, fall of 1974, Spring of 1975, and the fall of 1975.

In 1976, due to the expansion of the program statewide, the Huron Valley Interscholastic Horsemanship Association became the Michigan Interscholastic Horsemanship Association. On May 16, 1976, the first MIHA State Championship was held at Oak Ridge Stables in White Lake Township, with nearly 600 spectators. Winning the State Championship in 1976 was Romeo.

Also instrumental in those early days were Chuck Schoder and Gerald Fuller, the Milford and Hartland coaches. In 1975, Brighton, coached by Wanda Keech, and Pinckney, coached by Virginia Bennett joined the competition. Also joining in 1975 were teams from New Haven, Romeo, Almont, Oxford, Holly, Howell, Fowlerville, South Lyon, Novi, Northville, and Lakeland. Most of these schools are still competing today.

Wanda Keech, served as State Chairman, and Virgina Bennett served as Vice-Chairman, during the MIHA's early years. Other past State Chairmen are Bob Kibbie and Phil Tietsort. Today, Larry Flanary serves as State Chairman.

By 1978, the MIHA had grown so much it was necessary to divide the schools into "A" division teams (with ten or more riders), or "B" divisions teams (with less than ten riders). At the MIHA State Championship held in 1978 at Mason, South Lyon won the "A" division and Port Huron won the "B" division that year.

In 1983, Jean Husted became the State Secretary and served until 2004. Other long serving executive board members include Annette Thelen (Treasurer, Vice-Chair, and Jr. Steering Committe) and Bill Tingley (Vice President). By 1984, the MIHA had grown to 6 districts with 678 riders competing state wide. By 1987, the MIHA had 11 districts with 935 riders competing on 120 teams. In 1992, a "C" division was added for teams with four or less riders. In 1994, the MIHA had 14 districts with 173 teams and 1,118 riders.

In 2004, the MIHA started a pilot program for a Junior division for riders in sixth through eight grade. The Junior division became a formal part of the MIHA in 2006. What a great way to prepare our future high school riders.

By 2005, the MIHA had 2,146 riders on 327 teams in 19 districts. The MIHA State Championship had out grown all available facilities, so it became necessary to add a Regional competition to decrease the size of the State show. The first Regional competitions were held in 2005. In 2006, a "D" Division was added for teams with 2 or less riders. The MIHA had 2,090 riders on 332 team in 19 districts in 2006. In 2007, the MIHA grew to twenty districts with 353 teams and 2,111 riders competing state wide.



Spectator & Rider Code of Conduct

Parents, spectators, and coaches are not allowed in the ring at any time.

Parents, spectators, riders, and coaches shall not approach or communicate with the Judges at any time. Only the show staff shall be permitted to communicate with the Judges.

ONLY A COACH CAN DROP OR ADD CLASSES.

Only a coach can make a protest. Protest must be made in writing and turned into the show office. Show Staff will communicate with the Judge(s) regarding the protest.

Parents, spectators, riders, and coaches shall not communicate with the announcers while a class is running. You may think it is perfectly innocent to ask the announcer a question while a class is running. Unfortunately, it is very difficult for an announcer to focus on the class while several different people are asking her questions. This is especially true during the "Timed Events" classes, when the announcer is responsible for tracking the times. Please do not interrupt the announcers with questions!

No coaching from the sidelines.

No alcohol or tobacco is allowed at youth or school activities.

Negative or profane language is strictly prohibited.

Please show the show grounds some respect. Please adhere to the Midland County Fairground rules found on page 8. We don't want to be kicked out of this facility next year. Please help keep the grounds clean.

Be positive! Be respectful! Be patient and understanding!

Be helpful! We always need more volunteers! Remember, if you aren't part of the solution, then you are part of the problem.

Good Sports are Winners!!!

*Be gracious when you win,
and graceful when you lose!*

DISTRICT XI CONGRATULATES ITS DISTRICT WINNERS:

DIVISION A: HARTLAND

Coaches: Lynn Rosetto, Kerby Suhre, and Liggie Perkins
Riders: Paige Bolen, Kate Fliearman, Abbey French, Veronica French, Lauren Gaines, Elizabeth Goudie, Dan Iceberg, Alyssa Mediate, Stefanie Perkins, Christine Resconich, Cady Scannell, Emily Suhre, Brittany Tripp, Hallie Trott, Tom Tyson, Skylar Welti, Sara Wimbrow, and Kathryn Zadorozny
Grooms: Nick Gugin and Kayla Wozniak

DIVISION B: BRIGHTON

Coaches: Jerry Ranz and Carol Laske
Riders: Emily Berger, Alys Boan, Katy Clarke, Ali Droze, Jennifer Lane, Lisa Laske, Erin Turner, Anna Wagner, and Kaitlin Wurtz

DIVISION C: CHESANING

Coaches: John Mishler and Tessa Hoffman
Riders: Megan Chludil, Andrea Entrekin, Kelly Jo Hurst, Amanda Oesterreicher, and Chelsea Reiber

DIVISION D: PERRY

Coaches: Debbie Ladd and Carrie Bar
Rider: Carrie Alder

AND CONGRATULATIONS TO

REGION "D" DIVISION A CHAMPION: HARTLAND

REGION "D" DIVISION B CHAMPION: BRIGHTON

REGION "D" DIVISION D CHAMPION: PERRY

**GOOD LUCK AT THE 2007 MIHA STATE
CHAMPIONSHIP TO ALL OUR DISTRICT XI TEAMS!**



DISTRICT XII

High School Champions

-A- DIVISION CHAMPIONS MARINE CITY	COACHES TODD VISGA, CINDY LEONE, & KATHY MIKULSKI
COACHES SUE KUTCHEY KIM HAUSCHILD	-B- DIVISION CHAMPIONS EISENHOWER
-C- DIVISION CHAMPIONS CAPAC	COACHES ED & SHERRY WILCOX
COACHES NICOLE SCOTT TABITHA STAFFHORST	-D- DIVISION CHAMPIONS ALGONAC

Junior High School Champions

COACHES TRACY DOWNING GALE MYR	-B- DIVISION CHAMPIONS YALE
-C- DIVISION CHAMPIONS MARINE CITY	COACHES TODD VISGA, JEANA REICHLER, & LAUREN MIKULASKI
COACHES RAEANN RORAH BETH SEARS	-D- DIVISION CHAMPIONS ALGONAC

1 JENNA REICHLER 10 JORDAN VAN OVERBECIC 135 HEATHER REINKE 136 MEGAN WESSELS 138 LAUREN STENRATT 139 KRISTEN DUBATS 14 MEGAN DECOOPMAN 140 CAROLYN MOOD 141 ASHLEY CERKU 15 KARI JORAH 16 MEGAN LEDUC 17 ALEXANDRIA LUCIA 178 JUSTIN DECKER 179 ALLIE WOOD 18 CELIA BRAYMANN 180 KARLEY MATUSKI 181 KATIE BJORGAARD 19 MARISSA REINHOLD 198 NICOLE RINGLER 199 CAYLA ESSENBURG 2 TYLER WEGMEYER 20 BRITTANY PLASKEY 200 DANIELLE MOORE 201 KRISTEN HARMS 202 AMANDA RENNIE 205 EMILY CZARNECKI 208 STACEY SIMON 209 LAUREN HOWE 21 MEGHEN CARROLL 210 COURTNEY KOMJATHY 211 RACHEL WINTER 212 SARAH SHUBAY 213 CAITLIN TILLI 214 ALYSSA WAGNER 22 JAMES YOKLEY 23 SARAH HANEY 24 ALYSSA NOVAK 25 COLLEEN FLECK 26 COLLEN DORNBERG 27 CHELSEA STEINER 28 LUCIENNA LEVAN 29 NATALLIE RYBAK 3 TIA SALMON 30 SHANNON EATON 31 SAMANTHA SCHRADER 312 MEGHAN ROCK 313 HEATHER VERFAILLIE 314 CASSIE DEANDA 315 ASHLEY GEHLMANN 32 KRISTEN ABBEY 33 HANNAH CIEPLECHOWICZ 34 ZACH CIEPLECHOWICZ 35 KYLE DOWNING 36 REBECCA LANGEWICZ 360 ELIZABETH KUTCHEY 361 JESSICA HAUSCHILD 362 ANIA KROLL 363 MARINA CIPA 364 KAITLYN MARTIN 365 MELISSA BREWER 366 LIA BIANDO 367 KELSEY PYLAR 368 NATALIE KENNEDY 37 MEGHAN RITTER 38 BRITTANY HESS 39 ASHLEY SIECINSKI 4 JOE JELSCH 41 SARA TAYLOR 42 STEPHANIE WOODS 45 EVA KITOWSKI 46 KELLY GOOLSBY 47 LAUREN BICKSLER 48 CHRISTINA COLOMBO 49 SHEILA SKINNER 5 HUNTER JELSCH 50 MEGAN CHARTIER 51 MACKENZIE JOACHIM 52 CHELSEA METHENY 53 AMANDA WRIGHT 54 ALYSSA TERZO 55 MELISSA RUST 6 JESSICA ROMBACH 60 JENNIFER JAYNES 61 MARK HOWELL 62 JACKIE SMALL 63 SARAH SMALL 64 TESS PIOTROWSKI 7 ASHLEIGH MENKE 700 SARAH ARTMAN 701 CHELSEA BRABANT 702 AUSTIN SAAB 703 JACY ROSS 704 MIRANDA ROSS 705 AMARA DOOLEY 71 SARA SZILAGYI 72 SHELBY MCCORMICK 73 MANDA BARNES 74 RACHEAL BRAND 75 DANNIELLE HOLLAND 76 AMBER BERGAN 77 KELLY CAMPBELL 8 LAUREN MIKULASKI 84 ALLIE BRADLEY 85 CHELSEA MANNING 86 JOELENE BELLOW 87 HEATHER KENDRICK 88 CHELSEA SULLIVAN 9 MAGGIE OTTO 90 JESSICA KNOWLES



www.mihadistrict.12.org



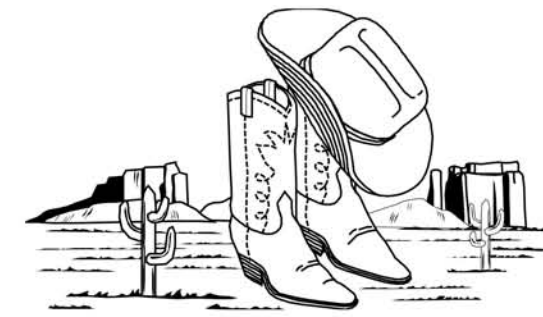
2007 Tentative Show Schedule

We say tentative because it is subject to change at any moment. Our plan is to start the show at 8:00 a.m. and continue through the classes listed for that day. However, certain factors may speed up or slow down the start times for some of the classes. For example, if the judging runs faster than expected, then the classes will start earlier than listed on the tentative show schedule. Likewise, if the judging runs slower than expected, then the classes will start later than listed on the tentative show schedule. Other conditions may speed up, slow down, or alter our schedule as well. Please keep track of how fast the show is running and be flexible.

	Time	Location	Event	Division/Order
Thursday 10/11	10:00 AM	Fairgrounds	Team arrival	All Divisions
	11:00AM to 12:00PM	Indoor	Open jump schooling	Division A
	12:00PM to 1:00PM	Indoor	Open jump schooling	Division B
	1:00PM to 1:30PM	Indoor	Open jump schooling	Division C
	1:30PM to 2:00PM	Indoor	Open jump schooling	Division D
	2:30PM to 3:30PM	Swine	Coaches Meeting	All Division
	3:30PM	Indoor	Opening Ceremonies	All Division
	4:00PM	Indoor	Equitation Over Fences	A, B, C, D
	4:30PM	Outside	Saddle Seat Pattern	A, B, C, D
	Friday 10/12	7:00AM	Swine	Coaches Meeting
8:00AM		Indoor	Western Fitting and Showing	A, D on North B, C on South
9:30AM		Indoor	Huntseat Fitting & Showing	A, D on North B, C on South
11:00AM		Indoor	Saddleseat Fitting & Showing	A, D on North B, C on South
8:00AM to 2:00PM		Outside	Trail	A, B, C, D
12:00PM -12:30 pm		Outside	Lunch Break (Trail resumes at 12:30PM)	
12:30PM to 2:00PM		Outside	Trail resumes	A, B, C, D
12:00PM to 12:30PM		Indoor	Lunch Break (30 Minutes after last showmanship)	
12:30PM		Indoor	Indiana Flags	A, C, D, B
4:30PM		Indoor	Cloverleaf	A, B, C, D,
Saturday 10/13	2:30PM	Outdoor	Saddle Seat EQ	A, B, C, D
		Outdoor	Saddle Seat Bareback	A, B, C, D
	7:00AM	Swine	Coaches Meeting	All Division
	8:00AM	Indoor	Western Equitation	A, B, C, D
	9:30AM	Outside	Western Bareback	A, B, C, D
	12:30PM to 1:00PM	Both rings	Lunch Break	
	1:00PM	Indoor	Huntseat Equitation	A, B, C, D,
	2:30PM	Outside	Huntseat Bareback	A, B, C, D
	4:00PM	Indoor	Pole Bending	A, B, C, D
	30 minutes after last class	Swine	Pizza Party	All Divisions
Sunday 10/14	7:00 a.m.	Swine	Coaches Meeting	All Divisions
	8:00 a.m.	Outside	Western Riding	B, C, D
	8:00 a.m.	Indoor	Western Riding	A
	9:30 a.m.	Indoor	Two-person Relay	A, B, C, D
	30 min after last class	Indoor	Closing Ceremonies	All Divisions



Midland County Fairgrounds map for



District 19 Champions

Caledonia – Division A
Hastings - Division B

North Pointe Christian – Division C – Region A Champions
Plainwell – Division D – Region A Reserve Champions

CONGRATULATIONS

Caledonia
East Kentwood
Gull Lake
Ionia
Maple Valley
Plainwell
South Christian

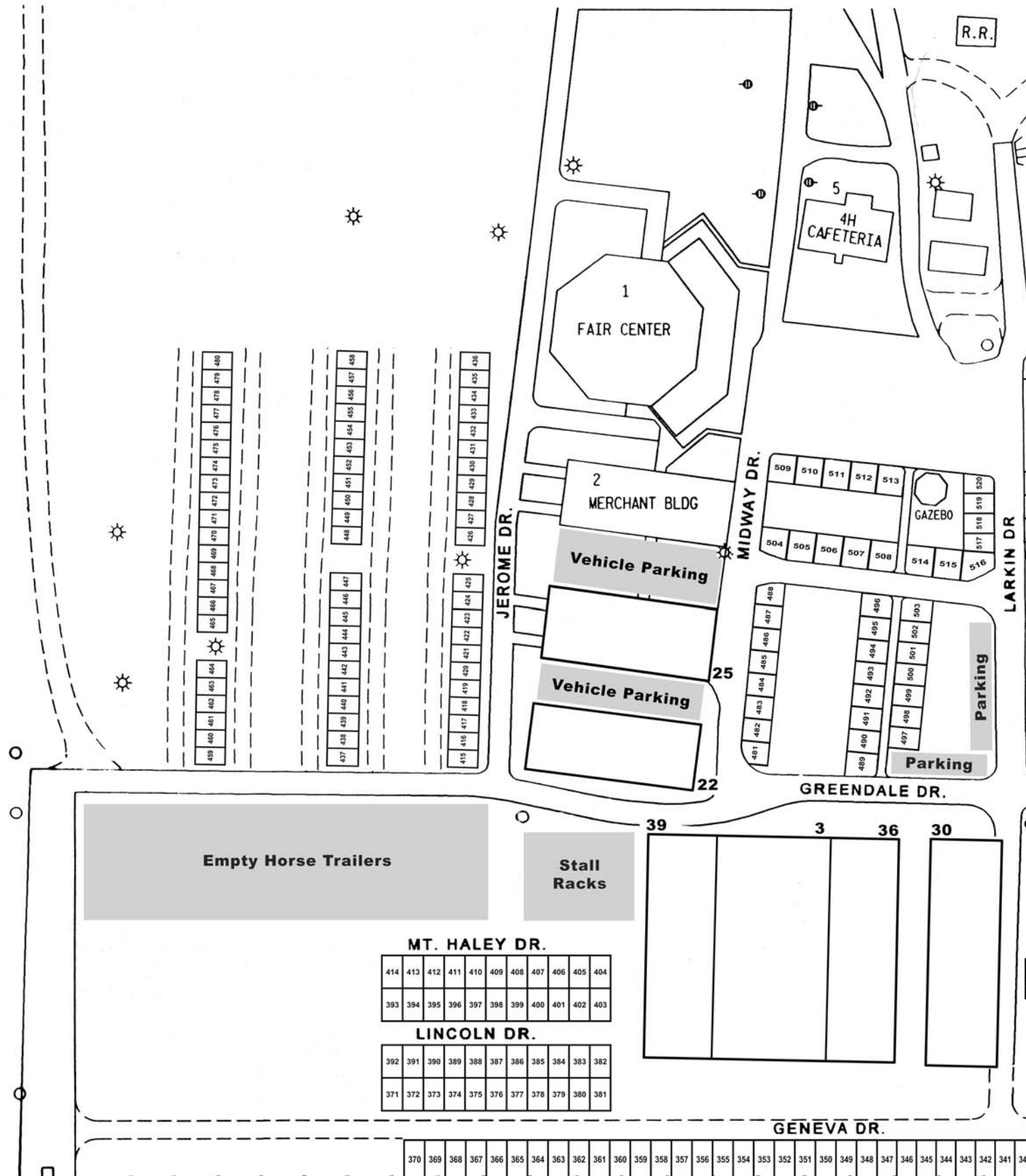


Delton Kellogg
Grand Rapids Christian
Hastings
Lakewood
North Pointe
Saranac
Thornapple Kellogg

West Michigan Lutheran

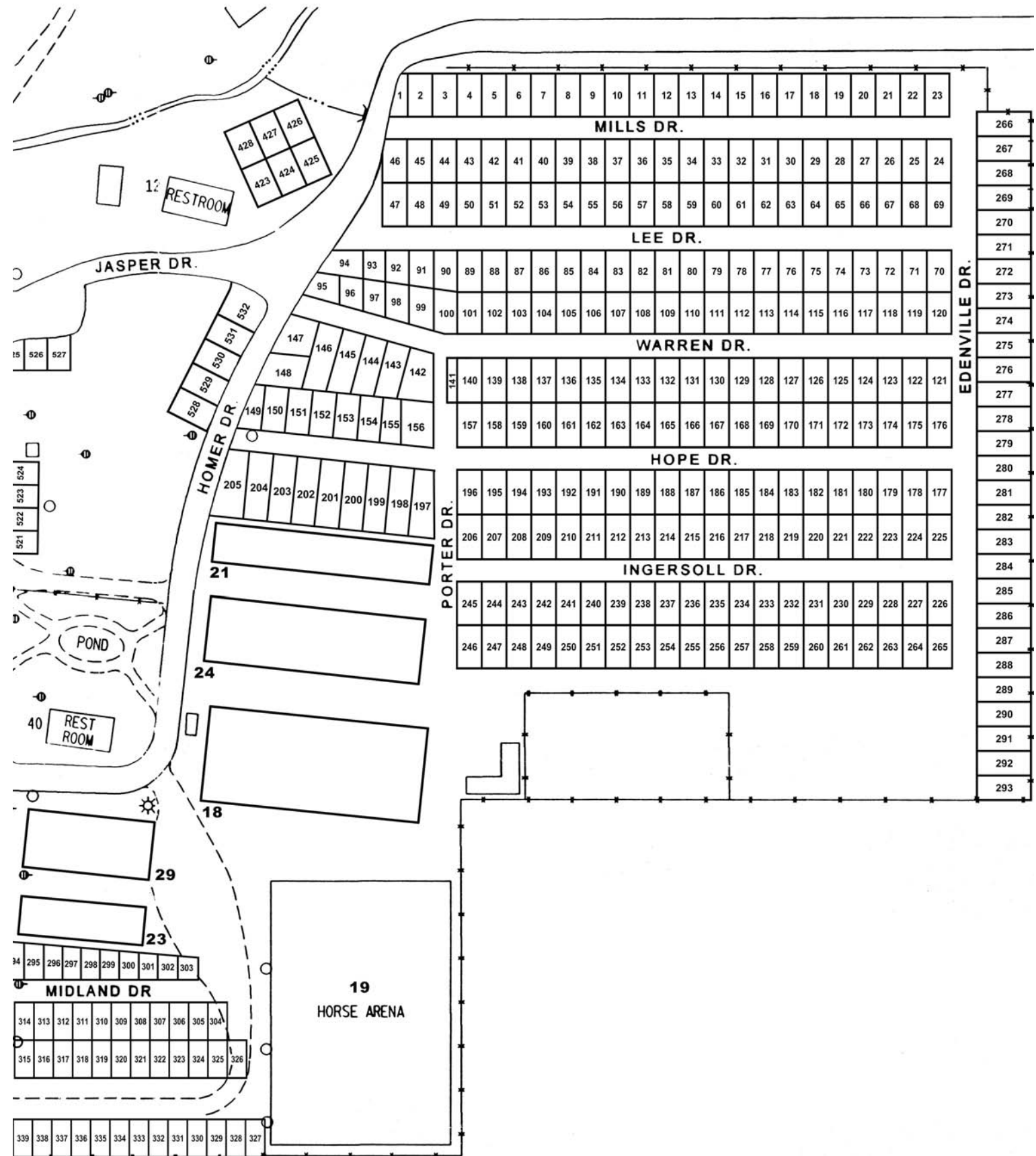
Good Luck at the State Finals

North Pointe & Plainwell





the 2007 MIHA State Championship



Midland County Fairgrounds Rules

These are Fairground rules and they will be enforced:

NO DOGS ALLOWED!! NO EXCEPTIONS!! No dogs in campers, in cars, or anywhere on the grounds. Anyone caught with a dog on the grounds will be expelled from the show ground.

THE ONLY THING TO BE LEFT IN THE HORSE STALLS ARE SHAVINGS AND MANURE! No straw, Styrofoam, wood pellets, artificial bedding, or trash are to be left in the stalls. Violators will be fined \$75.00.

NO STAPLES OR NAIL ON STALLS OR IN BARN! Feel free to decorate you stalls, but do not use staples or nail in the barns or anywhere on the grounds.

NO HORSES ON THE GRASS!! No riding, lunging, or even walking your horse on any grass area. The only exception to this rule is where the trail class is set up. If you are caught with your horse on a grassy area, you will be expelled from the show ground. Please clean up after your horse.

CAMPING IN CAMPSITES ONLY! Do not plug into barns or other buildings when camping.

CLEAN UP AFTER YOURSELVES! Please clean up after yourselves and your horses. All decorations must be completely removed.

MIHA thanks

Midland County Fairgrounds

for hosting the 33rd annual

2007 MIHA State Championships!

2008 MIDLAND COUNTY FAIR

August 10 – 16, 2008

Office & Grounds • 6905 Eastman Avenue • Midland, MI 48642
Phone (989) 835-7901 • Fax (989) 835-2336

Congratulations

Best wishes to the 2007 MIHA State Competitors from District VII!

Division A Teams:

Ann Arbor Pioneer, Dexter, Manchester, and Milan

Division B Teams:

Ann Arbor Greenhills, Ann Arbor Huron, Ann Arbor Pioneer, Dexter, Huron-New Boston, Ladywood, and Lincoln

Division C Teams:

Ann Arbor Pioneer, Belleville, Grosse Ile, St. Mary's Catholic Central, Summitt Academy, and Trenton

Division D Teams:

Airport, Washtenaw Christian Academy, and Westland John Glenn





Diebold Insurance Agency

Congratulations to all for making it to State Finals.

Enjoy your weekend and Good Luck!



Diebold Insurance Agency
817 W. Houghton Ave.
West Branch, MI 48661
989-345-0200
diebold@dieboldinsurance.com

Diebold Insurance Agency
1414 Houghton Lake Dr.
Prudenville, MI 48651
989-366-4606
diebold@dieboldinsurance.com

*District 8 would like to congratulate our teams
for making it to the Regionals and then to State Finals!*



"A" Division – Reed City
"B" Division – Chippewa Hills
"C" Division – Lakeview
"D" Division – Ewart

Good Luck at the State Finals!!!



*MIHA's Executive Board and Board of Directors would like to
extend their sincere appreciation to ALL of our volunteers.*

The MIHA is run by volunteers. The service the volunteers provide is "priceless" because the MIHA would not run without our volunteers. If the MIHA had to pay all of the volunteers what their service is worth, it would not be able to afford the costs. We wish to thank each and every coach, gate keeper, announcer, ring master, set crew, and office worker who helped with our shows this year!

The MIHA would like to thank all of those who take on the difficult task of running our association on a daily basis. Those of you working at the top put up with a lot of grief with very little reward, so please accept our heart felt thank you!

Regional Chairpeople

Region A – Adela Lark
Region B – Terry Scurlock
Region C – Todd Visga
Region D – Arlene Koenig
Region E – Hidi Morford
Region F – Patty Martin

District Chairpeople

District One – Cindy Tesolin
District Two – Fred Stockley
District Three – Judy Stilwell
District Four – Terry Scurlock
District Five – Mike Foote
District Six – Arlene Koenig
District Seven – Myro Zolynsky
District Eight – Tiffany Spedowski
District Nine – Kim Kitchel
District Ten – William Miller
District Eleven – Amy Husted
District Twelve – Todd Visga
District Thirteen – Angie Tippin
District Fourteen – Marie Curell
District Fifteen – Dennis Stanton
District Sixteen – David Kuyers
District Seventeen – Hidi Morford
District Eighteen – Patty Martin
District Nineteen – Adela Lark
District Twenty – Beth Harwood



Division "A" Teams

Region A Champions • District 16 • Coopersville

Coaches – Trish VerMeer

Assistant Coaches – Carol Groenink

109	Emily Speet	198	September Croel	322	Julia Shukis
153	Becky Creager	228	Krystal Wilson	363	Sarah Breuklander
162	Tracey Kramer	246	Keeley Rosel	400	Lauryn Homik
169	Ashley Derby	257	Alyssa Draft	423	Erica Acton
174	Beth Layton	281	Ashley Sobota		
194	Ashley Brecken	282	Hannah Heinz		

Region A Reserve Champions • District 5 • Cedar Springs

Coaches – Jeff Armstrong

Assistant Coaches – Dan Dunham, Lynn Peters, Katie Link, Chrissy Doyle

205	Amber Dunham	301	Danielle Naffzinger	371	Karli Myers
229	Courtney Jensen	337	Tabetha Irwin	446	Kristina Peters
236	Josh Armstrong	346	Rebecca Carpenter	463	Shayna Misner
261	Ashley Karns	349	Samantha Naffziger		

Region B Champions • District 15 • Sturgis

Coaches – Kathy Beach

Assistant Coaches – Laurie & Warren English

134	Elizabeth Sutton	253	Lorin Padgurskis	321	Ryan Lytle
156	Tyler Clark	302	Justin Cooper	345	Allysa Hull
168	Corinne English	305	Brittaney Jones	348	Chelsea Leer
222	Kasi Huver	314	Julianne Staples	413	Kelsey Maystead

Region B Reserve Champions • District 4 • St. Johns

Coaches – Kathy Lowell

Assistant Coaches – Lisa Powell

115	Katelyn Peacock	223	Jessica Dymond	379	Becca Gabriel
117	Stephanie Tiedt	292	Erin Fedewa	415	Elie Durkee
192	Mitzi Nelson	317	Lara Stolzenburg		Elizabeth Kyes
200	Nicole Mitchell	350	Jessica Nelson		
207	Amanda Zlotek	374	Becca Peacock		

Region C Champions • District 11 • Oxford

Coaches – Dee Shepherd

Assistant Coaches – Liz Shepherd, Kathy McGeen, Shannon Trezil

102	Angie Pollack	248	Amanda Roth	293	Kellie Roth
189	Rachel Caputo	258	Carly Eisenhardt	353	Bridget Standifer
227	Alex LaBarge	271	Kaitlyn Trezil	406	Kristin Gaines
242	Natalie Musgrove	285	Rebekah Bertapelle	447	Cidney Fritche



Rick's Tack

& SUPPLY SHOP LLC



**100 60th Ave
Hartford, MI 49057
(269) 621-3069**



www.ricks-tack.com

STATE SHOW VENDOR!

Congratulations 2007 Hartland Equestrian Team!

"These Are My People"

Paige Bolen, Kate Flierman, Abbey French, Veronica French, Lauren Gaines, Liz Goudie, Nick Gugin, Dan Iceberg, Alyssa Mediate, Stefanie Perkins, Christine Resconich, Cady Scannell, Emily Suhre, Brittany Tripp, Hallie Trott, Tom Tyson, Skylar Welti, Sara Wimbrow, Kayla Wozniak and Katie Zadorozny

District 11 Division A Champions 2001, 2002, 2003, 2004, 2005, 2006 and 2007!



HORSEPOWER YOU CAN DEPEND ON



TopKick C4500

Sierra 3500HD

Yukon

Your Tow Vehicle Headquarters

For more info call, Danny Ray, Cliff Hobson or Bill Harper



5-YEAR POWERTRAIN
2007 models only.
Whichever comes first.
See dealer for limited
warranty details.

Patsy Lou
GMC

GMC
WE ARE PROFESSIONAL GRADE



WILLIAMSON

(810) 732-7500 • 1-800-362-5246 • www.patsylou.com
G-5111 Corunna Road, Flint, MI 48532

Division "A" Teams (continued...)

Region C Reserve Champions • District 1 • Milford

Coaches – Cindy Tesolin
Assistant Coaches –

121	Kacie Williams	213	Chelsea Shrewsbury	389	Jocelyn Abbott
143	Kim Churchwell	272	Liz Schmiding	408	Morgan Watkins
166	Sharon Boggetta	273	Elisabet Teagan	429	Breanne Bedell
183	Drew Abbott	315	Ali Dreim	478	Will Abbott
185	Samantha Simmons	385	Sam Johnson	491	Justin Olivier

Region D Champions • District 11 • Hartland

Coaches – Lynn Rossetto
Assistant Coaches – Liggie Perkins, Kerby Suhre

112	Dan Iceberg	306	Lauren Gaines	409	Tom Tyson
144	Hallie Trott	311	Veronica French	417	Christine Resconich
181	Sara Wimbrow	323	Emily Suhre	428	Shylar Welti
206	Cady Scannell	324	Paige Bolen	434	Elizabeth Goudie
212	Abbey French	383	Kate Flierman	462	Alyssa Mediate
266	Brittany Tripp	404	Kathryn Zadorozny	483	Stephanie Perkins

Region D Co-Reserve Champions • District 6 • Bullock Creek

Coaches – Brent Huyett
Assistant Coaches – Stacie Huyett, Rick Young

142	Kelcy Wilson	361	Samantha Marsh	419	Shelly Hays
160	Kimberlee Squanda	364	Laura Kruse	422	Susan Avery
262	Emily Plante	368	Tabitha Stauffer	459	Becca Gray
300	Trisha Burch	382	Jeffery Gray	499	Andrea Kissinger
312	Madeline Hays	388	Ashley Bartosek		

Region D Co-Reserve Champions • District 14 • Croswell-Lexington

Coaches – Lynn Koppel
Assistant Coaches – Robin Lee

128	Amber Burch	378	Amber Bennatts	468	Katie Miller
150	Ashley Lee	380	Kaitlyn Young	472	Derek Newton
232	Alec Koppel	401	Eugene Ludington	495	Clara Scheid
277	Kelly Burge	457	Katie Scheeres		

Region E Champions • District 9 • Ludington

Coaches – Doyle Fenner, Tanya Walter
Assistant Coaches – Lynne Bennett, Karol Erickson, Amanda Winczewski

141	Taylor Avedisian	327	Ariel Preston	465	Lexie Preston
221	Erin Boes	351	Alex Wilson	475	Megan Mast
252	Kohlee Kennedy	386	Ariel Bowden	490	Alyssa Cambridge
263	Meridith Horowski	391	Janelle Erickson	496	Christa Fulton
283	Kyle Fenner	440	Jessa Armstrong		

Division "A" Teams (continued...)

Region E Reserve Champions • District 8 • Reed City

Coaches – Amy Decker

Assistant Coaches – Andresa Maciejewski, Sarah Morlock

113	Brooke Sterling	164	Kelsey Koopman	274	Travis Mix
126	Kayci Holmquist	218	Dani Sweet	308	Katie Harrington
131	Leah Dawson	243	Megan Morren	394	Amber Bedgood
149	Jade Erbes	270	Donald Dawson	414	Chelsey Wells

Region F Champions • District 18 • Traverse City West

Coaches – Deb Cochran

Assistant Coaches – Rose Bohrer, Betsy VanDyke

133	Jill Kubesh	231	Rachel Makowski	381	Nikki Leonardi
173	Cassandra Kelly	249	Caitlin Stites	402	Chelsea Brant
201	Grace Witkop	280	Allyson Mayer	412	Brittany Perry
211	Sam Vitous	328	Marie Aldridge	433	Wesley Mayer
216	Alisa Wilcoxon	366	Kelsey Leonardi	487	Ryhan Nadji

Region F Reserve Champions • District 20 • Petoskey

Coaches – Beth Ann Harwood

Assistant Coaches – Jan Wieland

107	Emily Love	186	Amanda Brown	398	James Hollopeter
119	Debbie Aulgur	191	Courtney Graham	435	Michelle Nellis
138	Chelsea Utt	204	Loren Swank	441	Megan Mitchem
154	Emily Knitter	217	Katie Grangood	451	Wesley Hoover
176	Lauren Graham	333	Cody Utt	453	Ellie Waterman
180	Sarah Rynbrant	336	Christy Maskaluk		

Division "B" Teams

Region A Champions • District 5 • Rockford B

Coaches – Sabrina Nyenhuis

Assistant Coaches – Cathy Martin-Nitschke

202	Emily Canda	267	Lindsay Davidson	390	Samantha Alters
264	Marissa Brower	304	Alexis Thome	492	Stephanie Huber

Region A Reserve Champions • District 16 • Unity Christian

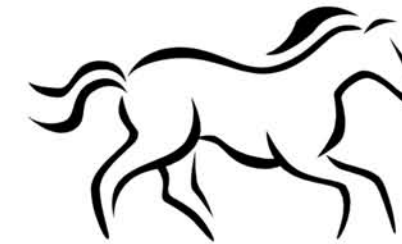
Coaches – Jennifer Kooyer

Assistant Coaches – Carmen Schrieber

199	Ashton McAlary	265	Sarah Tacoma	362	Meghan Warners
226	Gabrielle Selvius	343	Jillian Schellenberg	396	Mindi VanDyke
234	Lynnea Brookhouse	357	Stephanie Hoatlin	473	Lauren VanderLaan

*Good Luck at the State Finals
North Pointe & Plainwell*

Stay Safe & Have FUN!!



Adela & Lauren Lark

*Congratulations
NORTH POINTE CHRISTIAN*

*Emma
Karly
Nate*



*Katie
Kristie
Cori*

Coached by: Donna & Stacie Berends

*Dr. John Berends
Equine Veterinary Services*

269-795-4430

Good Luck at the State Finals



Best wishes to ALL at the State Championships!



Custom Painted Portraits
Capturing a moment in time

Michelle Kostrzewa
Nevaeh K Farm
1785 Hotchkiss Road
Freeland, MI 48623
989-695-2711
michelle@nevaehkfarm.com
www.nevaehkfarm.com

Satisfaction guaranteed on all work

GJ Fellows & Sons
331 W Wackerly, Sanford MI (989)687-6989

Welding/Fabricating	Flag Poles
Trailer Repair & Parts	Saddle Racks
Used Tractor Parts	Decorative Gates

Congratulations!!
Meridian Equestrian Team and good luck at MIHA State Championship



S. HOCK PAINTING
1795 Peach Lake
West Branch, MI 48661

Shane Hock-owner
Business: 989-345-9947
Cell: 989-387-8297
E-mail: s.hockpainting@hotmail.com

COMMERCIAL
RESIDENTIAL
-Call for a free quote



Beauty.
Intelligence.
Attitude.

Elissa Graham
(989) 729-0214
fireboltmorgans@aol.com

LAKESHORE EQUESTRIANS
 **2007**

Heather, it's been a great ride!
Good luck at State!
Fruitcups Rule! Love, Mom & Dad

LAKESHORE EQUESTRIANS
 **2007**

Kait, it's been a great ride!
Good luck at State!
Fruitcups Rule! Love, Mom & Dad

MATT LANGLEY PERFORMANCE HORSES

TRAINING • BOARDING • SHOWING
LESSONS • SALES

☆☆☆
MIDLAND, MICHIGAN
740-624-3957

Dear Katie,
We are so proud of you and all you have accomplished this past year with Bailey. Most of all we are proud of the wonderful spirit and character that shines through in all you do. Good Luck North Pointe Christian. We love you.
MOM & DAD

Division "B" Teams (continued...)

Region B Champions • District 15 • Marshall

Coaches – Mary Adams

Assistant Coaches –

103	Kara Bosserd	342	Karrly Sykora	395	Morgan Smith
130	Jordan Seeley	354	Shayne Smith	424	Justin Nickles
147	Tori Patton	356	Brooke Squires		
220	Erica Rugg	370	Sarah Marhle		

Region B Reserve Champions • District 3 • Lakeshore

Coaches – Mary Nye

Assistant Coaches – Steve Walton, Marty Schmaltz

118	Anika Johnson	288	Rachel Bammann	450	Brittany Bly
152	Kaitlyn Mayne	318	Heather Knight	460	Casey Didanato
284	Becca Bammann	399	Joan Milius		

Region C Champions • District 2 • Clarkston

Coaches – Marc DeLisle

Assistant Coaches –

110	Paige Zelinski	247	Jacquelyn McClain	387	Amanda Cudney
132	Darci Molina	251	Jenny Gambrel	437	Shelbi Watson
136	Jessica Parke	307	Stephanie Bean		
188	Chelsea Adams	360	Michelle Voelker		

Region C Reserve Champions • District 7 • Huron New Boston

Coaches – Myra Zolynsky

Assistant Coaches –

127	Morgan Wright	335	Denny Blount	479	Aashan Bucceralli
179	Kia Bare	359	Haley Kellar	480	Emily Konkel
233	Gary Bailey	448	Kayla Keller		
313	Tommy Blount	456	Chelsea Reynolds		

Region D Champions • District 11 • Brighton

Coaches – Jerry Rans

Assistant Coaches – Carol Laske

123	Alysa Boan	177	Katy Clark	244	Emily Berger
158	Erin Turner	210	Kaitlin Wurtz	295	Anna Wagner
163	Lisa Laske	239	Ali Droze	367	Jennifer Lane

Region D Reserve Champions • District 11 • Hemlock

Coaches – Tina Taschner

Assistant Coaches – Jeanette Wendling

104	Lauren Liebold	332	Kyle Kedzlenki	484	Breck Gramski
256	Rachel Sievert	340	Kristen Chasnis		
259	Ashley Zolinski	352	Samantha Yakel		



Division "B" Teams (continued...)

Region E Champions • District 8 • Chippewa Hills

Coaches – Elise Pillote

Assistant Coaches – Joy Beth Hicks, Dawn Wernette

161	Sydney Morse	268	Tosti Wernette	418	Ashton Ulrich
171	Nicole Wernette	275	Cortney Wernette	432	Alyssa Ulrich
182	Corrin Simon	341	Tara Wernette		
237	Julianne Mayer	365	Maryea Siddall		

Region E Reserve Champions • District 9 • Spring Lake

Coaches – Jamie Fortney

Assistant Coaches – Sandy Doom, Joan Meekhof, Kate Jakobcic

139	Kristen Stroebe	319	Abby Schutte	375	Rachel Rant
187	Katie Boven	320	Emma Jakobcic	488	Jeana Schuitman
298	Alison Redick	347	Karrie Meekhof		

Region F Champions • District 18 • Traverse City St. Francis

Coaches – Mike Zerbe

Assistant Coaches – Patty Martin

135	Shayna Zerbe	373	Kari Kurtz	498	Chelsea Deisler
155	Marley Martin	377	Katherine Kirby		
260	Katherine Leonhard	392	Kristen Seymour		

Region F Reserve Champions • District 13 • Tawas

Coaches – Kim Wickert

Assistant Coaches –

303	Kendra Cooley	411	Kelsey Cooley	470	Lindsay Grzesik
325	Katricia Olli	439	Gwin Simpson		
405	Matt Hughes	443	Ashley Beckett		

Division "C" Teams

Region A Champions • District 19 • North Pointe Christian

Coaches – Donna Berends

Assistant Coaches – Stacie Berends


125	Nate Geers	255	Emma Geers	445	Karly Sikma
172	Kristie Sikma	430	Katie Meredith		

Region A Reserve Champions • District 5 • Lowell

Coaches – Mike Foote

Assistant Coaches – Linda Foote, Kathie VanEns, Mary Wolf

208	Kendall Hewitt	316	Jessi Meyers	471	April Wolf
309	Amy VanEns	454	Amber Waldron		



**Saginaw Valley
Equine Clinic**

6495 N River Road, Freeland MI (989) 695-5701

Brad T. Cumper, DVM Matthew W. Davis, DVM

Ship-in Facilities Available – Lameness –
Reproduction – Medicine - Surgery

WWW.THEWIREHORSE.COM
FREE SHIPPING ON
SHOW CLOTHING

TOLL FREE
1-877-322-8503

WE CARRY
CIRCLE Y, TUCKER,
ROYAL WIRE
& MUCH MORE

The Wire Horse
WESTERN STORE

12500 CORUNNA RD.
LENNON, MI 48449
FAX 810.621.5391



SLIDING S RANCH

Affordable Quality Horses and Tack
Mobile Unit Available for Horse Shows & Clinics
Complete Line of English & Western Equipment

6776 Big Hand Road TAMMY SCHLABACH
St. Clair, Mich. 48079 (586) 899-2085

CONGRATULATIONS

Carrie Alder

District XI Champion – Division D
Region D Champion – Division D

Good luck at States!!!

Judges transportation courtesy of:



CHEVROLET

Serving Southeast Michigan since 1970




Lou LaRiche
President

40875 Plymouth Road
Plymouth, MI 48170
www.LaRicheCHEVY.com
734-453-4600



TOM'S WESTERN STORE

DRIVING • ENGLISH • WESTERN • RODEO



English, Western, Rodeo, Tack and Equipment

Harness

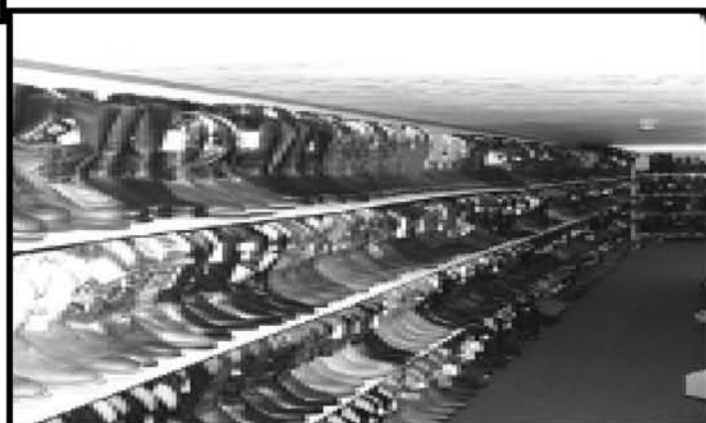
Stable and Barn Supplies

Repair Work for Harness and Saddlery

English and Western Hats,
Boots and Clothing

Cattle Show Equipment

Gates & Panels



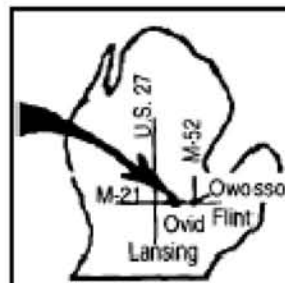
Checkout Our Monthly Sales
Throughout The Year!



HOURS: Mon., Tues., Wed., Thurs., Sat., 9:00 - 5:30 • Fri. 9:00 - 9:00 • Closed Sundays

TOM'S WESTERN STORE

One Mile West of Ovid on M-21
8982 East M-21, Ovid, MI 48866
www.tomswesternstore.com
1-800-830-5446 or (989) 834-5446



Division "C" Teams (continued...)

Region B Champions • District 3 • Coloma

Coaches – Lisa Norden

Assistant Coaches –

151	Emily Koenigshof	254	Patrick Cortiville	427	Sarah Kettlehut
170	Mikayla Romeo	289	Megan Doolen		

Region B Reserve Champions • District 10 • Clinton

Coaches – Lily Kittle

Assistant Coaches – Pat Pilbeam

145	Casey Kelley	165	Kim Pilbeam	195	Samantha Kittle
-----	--------------	-----	-------------	-----	-----------------

Region C Champions • District 7 • Grosse Ile

Coaches – Nicole Luton-Dicks

Assistant Coaches – Rob Luton, Julie Pente

140	Hannah Hill	477	Christina Thomas	481	Katelyn Thomas
431	Alex Plemmons				

Region C Reserve Champions • District 2 • Brandon

Coaches – Kate Stockley

Assistant Coaches – Kathy Stockley

190	Jessica Nelson	384	Celina Prince	461	Lauren Elliott
297	Kaitlin Davis	444	Amanda Fisher		

Region D Champions • District 14 • Deckerville

Coaches – Deann Asher

Assistant Coaches – Linda Williams

106	Nicole York	290	Rose Pierson	331	Julia Grell
241	Kristen Asher				

Region D Reserve Champions • District 6 • Meridian

Coaches – Julie Clark

Assistant Coaches – Tony Gates

196	Mercedes Parisi	438	Jessica Gates	486	Kyle Fellows
329	Nicole Smith				

Region E Champions • District 9 • Fruitport

Coaches – Kim Kitchel

Assistant Coaches – Phyla Bramer

120	Jenny Mershon	235	Allison Virtue	416	Samantha Gutierrez
225	Ali Cavanaugh	287	Justine Turner		



Division "C" Teams (continued...)

Region E Reserve Champions • District 8 • Lakeview

Coaches – Mindy Hersey
Assistant Coaches – Janet Chapin

330	Monica Larson	410	Bailey Waite	494	Brittney Jones
407	Kara Krause	469	Serena Jenkins		

Region F Champions • District 18 • Traverse City Central

Coaches – Tamlynn Evans
Assistant Coaches – Juli Taft

276	Ally Rivard	397	MacKenzie Donohue	497	Ali Zachritz
393	Julie Boss	493	Jamie Endicott		

Region F Reserve Champions • District 13 • Standish-Sterling Central

Coaches – Kelley Karnes
Assistant Coaches – Audrey Karnes

124	Courtney Rokosz	425	Jordon Dodd	455	Terra Hartley
214	Ariana Walters				

Division "D" Teams

Region A Champions • District 16 • Hudsonville

Coaches – Cynthia Bystra
Assistant Coaches –

376	Tiffany Bystra	474	Kaylee Meekhof
-----	----------------	-----	----------------

Region A Reserve Champions • District 19 • Plainwell

Coaches – Sue LaCoss
Assistant Coaches –

193	Cassie Mohney	245	Kimberly La Coss
-----	---------------	-----	------------------

Region B Champions • District 3 • Cassopolis

Coaches – Michelle Sindell
Assistant Coaches –

310	Sarah Brenneman	476	Kimmy Bratton
-----	-----------------	-----	---------------

Region B Reserve Champions • District 10 • Whiteford

Coaches – Tony Bratt
Assistant Coaches – Missy Gordon

108	Nicholas Bratt	278	Caiti Gordon
-----	----------------	-----	--------------

Region C Champions • District 2 • Lapeer West

Coaches – Sandra Bodenbach
Assistant Coaches –

116	Stephanie Bodenbach	291	Mark Bodenbach Jr
-----	---------------------	-----	-------------------

Division "D" Teams (continued...)

Region C Reserve Champions • District 7 • John Glenn

Coaches – Dana Rudnicki
Assistant Coaches – Barb Turnbull

137	Kyle Rudnicki	436	Alex Barnes
-----	---------------	-----	-------------

Region D Champions • District 11 • Perry

Coaches – Debbie Ladd
Assistant Coaches – Carrie Barr

489	Carrie Alder
-----	--------------

Region D Reserve Champions • District 14 • Brown City

Coaches – Amanda Smith
Assistant Coaches –

230	Lisa Young	240	Alecia Martus
-----	------------	-----	---------------

Region E Champions • District 9 • Providence Christian

Coaches – Heidi Oosting
Assistant Coaches –

167	Evie Hollerbach	250	Morgan Oosting
-----	-----------------	-----	----------------

Region E Reserve Champions • District 8 • Evert

Coaches – Stacie Dennis
Assistant Coaches – Deb Babcock

339	Kelsey Dennis	466	Tanya Babcock
-----	---------------	-----	---------------

Region F Champions • District 20 • Gaylord

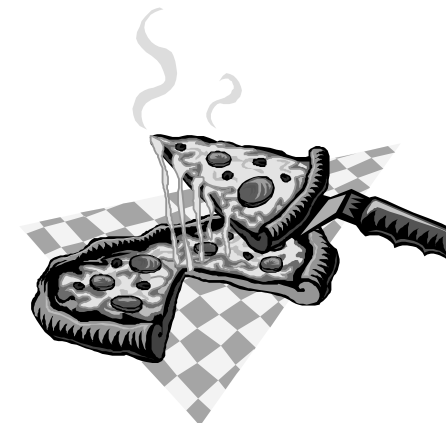
Coaches – Diana Donajkowski
Assistant Coaches – Melissa Falk

159	Sammie Hoogerhyde	372	Jenna Donajkowski
-----	-------------------	-----	-------------------

Region F Reserve Champions • District 13 • Skeels Christian

Coaches – Stephan MacDonald
Assistant Coaches – Tammy MacDonald

420	Emily MacDonald
-----	-----------------



Rider Pizza Party & DJ

Saturday

(after the last class of the day – approximately 6:00 p.m.)



Plan for your dreams through personal financial planning

David J Kuyers, CRPC®

Whether you're starting a small business, obtaining life insurance, or sending your kids to college, I can help you plan to reach your financial goals through personal, customized financial planning.

Call (800) 240-8532 today.

Ameriprise Financial Services, Inc.
David J. Kuyers, CRPC®
Financial Advisor
3270 Central Boulevard
Hudsonville, MI 49426
616-797-0866
Toll Free: 800-240-8532
david.j.kuyers@ampf.com



**T
H
A
N
K
K
Y
O
U**

DISTRICT 1

*WE APPRECIATE YOUR
DEDICATION
INSPIRATION
LEADERSHIP
ENCOURAGEMENT*

THANK-YOU MR. FLANNERY
THANK-YOU MR. KUYERS
THANK-YOU MR. COOK
THANK-YOU MS. ARMSTRONG
THANK-YOU MR. GODSEY
THANK-YOU MS. HUSTED
THANK-YOU MR. RICH

**YOUR TIME & EFFORT
IS ALWAYS NOTICED**

**MILFORD NOVI HOWELL
HOLLY LAKELAND MERCY
WALLED LAKE NORTHERN
WALLED LAKE CENTRAL
WALLED LAKE WESTERN
STEVENSON WHITMORE LAKE
GARDEN CITY SOUTH LYON
CANTON - SALEM - PLYMOUTH**

**E
X
E
C
U
T
I
V
E
B
O
A
R
D**

FROM THE FUTURE LEADERS OF THIS GREAT COUNTRY
YOUTH ON HORSEBACK