

44TH ANNUAL



2018 MIHA STATE CHAMPIONSHIP

Midland County Fairgrounds • Midland, MI

October 11-14, 2018

Welcome to the Show	3	Code of Conduct.....	6
M.I.H.A. Executive Board.....	3	Fairground Rules	7
Show Judges	4	Tenative Show Schedule	8-9
History of the M.I.H.A.	4	Fairground Map.....	10-11
Show Staff	5	Rider Information.....	14-16
Service Providers	5	MIHA Appreciation Page	17
Vendors	5	State Show Evaluation Form	18

CONGRATULATIONS DISTRICT 9

District 9 Champions and Region D Champions

Ludington High School – Division B



Left to right front row: Brianna Hindman, Evan Bennett, Carley Hindman, Ella Wickham, Garrett Bennett, Coach Tanya Walter, Team Assistant Chesney Griffis
Left to right back row: Coach Lynne Bennett, Coach Janelle Beaver, Coach Meghan Gillies, Coach Alyssa Walter, Coach Doyle Fenner

Grand Haven High School – Division C



Left to right: Ani Fett, Hannah Smith, Sara Sokoly, Ashlynn McKee, Paige Beland

District 9 Reserve Champion and Region D Reserve Champion

Hart High School – Division D



District and Regional Division D Reserve Champs: Hart High School
Left to right: Coach Tara DeMarr, Landry Tate, Tressa Swihart, Coach Amanda Coker
In front: Hoss (team spirit booster)

The M.I.H.A. Executive Board

STATE CHAIR

Michael Yanz
Dansville, MI
exec_board@miha.org

VICE CHAIR

Brian Bode
Wayland, MI
exec_board@miha.org

VICE CHAIR

Lauren Fetner
Fowlerville, MI
exec_board@miha.org

SECRETARY

Patty Yanz
Dansville, MI
exec_board@miha.org

TREASURER

Kim Clapp
exec_board@miha.org

WEBMASTER

Brian Bode
Wayland, MI
exec_board@miha.org

RULES CHAIRPERSON

Amy Franks
exec_board@miha.org

STATE SHOW CHAIRMAN

Marc DeLisle
exec_board@miha.org

Welcome To the M.I.H.A.'s 44th Annual State Championship!

Welcome to the Michigan Interscholastic Horsemanship Association's State Championship! We would like to congratulate all of the teams and riders competing this year. Not only were you District champs, but you were also top in your Regional competitions.

We have made some changes to our show schedule in this past couple of years, which we think will help make things run smoother. We have placed all Fitting & Showing on one day, so the poor horses won't have to freeze with multiple baths if the weather is bad. We placed the bareback classes opposite the saddle classes for the same seat, so there will be less outfit and tack changes. We now have a dedicated staff for Ring Managers, Ringmasters, Scribes and Announcers. So we can keep volunteer demand to a bare minimum.

Getting any horse show to run smoothly can be a challenge, so we ask for your patience if we hit a few bumps along the way. Please remember that this organization is run entirely by volunteers. We will try our best to be polite and respectful to you, and ask that you treat your show staff equally well. Please read the "Code of Conduct"; also, please read and follow the Midland County Fairground Rules.

You will find a tentative show schedule, we say tentative because it is subject to change at any moment. Our plan is to start the show at 8:00 a.m. and continue as scheduled through the classes listed for that day. However, certain factors may speed up or slow down the start times for some of the classes. We ask for your cooperation as we try to keep the show moving.

Please remember our **Annual Sportsmanship award sponsored by Crestview Tack, Mason, MI**. This award will be given to the exhibitor the displays the greatest amount of sportsmanship at the State Finals. Each team head coach, board of director in attendance and executive board member will receive ballot. Said head coach, BoD and executive board member can nominate anyone except those on your team or who you have direct/indirect affiliation with. So during the show please keep your eyes peeled for that one special MIHA young adult that truly exemplifies true sportsmanship. Ballots will be collected throughout the show but are due by Saturday night.

Your thoughts and concerns are important to us! **Please take a few moments to fill out and turn in the show evaluation form found in the back of this program.** Also, do not hesitate to contact your Executive Board members to give us your feedback directly.

We look forward to a great competition! We wish all of our teams and riders good luck!

2018 M.I.H.A. STATE CHAMPIONSHIP JUDGES

Mark Smith • Trevor Walton • Jane Engers • Elaine Page • Angie Deal • Joe Gill

HISTORY OF THE M.I.H.A.

Since you are at the M.I.H.A. State Championships, you probably know all about the M.I.H.A. as it exists today. But we thought you might like to read about how the M.I.H.A. got started. The early days of the MIHA are blurry because no official records exist. However, here is what the historian committee was able to uncover.

In 1968, a group of parents were involved in an equine census around the same time. After realizing that there were over 10,000 horses in Oakland County, Ed Chezy, Kelly Lawrence, and Carmi Edwards purposed a school sponsored horsemanship program to the Huron Valley School Board. The School Board recommended holding a horse show to determine the extent of interest in a horsemanship program.

In 1972, a horsemanship committee was formed and the first ever “Father’s Day Show” was held. A portable arena and P.A. system were used to hold the show in front of the Milford High School. The show was so successful that it brought in 1200 spectators, 600 entries, and a profit of \$1,700. This success justified establishing an educational horsemanship program. Ed Chezy, Kelly Lawrence, and Gerald Fuller presented a proposal to the Board of Education. At the same time, the Director of Community Schools, Carmi Edwards, and the horsemanship committee requested that the Board of Education designate 20 acres of land adjoining Milford High School to be used for the horsemanship program, the annual horse show, and the interscholastic equestrian team program. The horsemanship program passed.

The first equestrian team competition was held in the fall of 1973 at the Bogie Lake Country Club indoor facility between 5 schools, Hartland, Howell, Holly, Fenton, and Milford, with 30 to 40 riders competing. No one remembers the outcome. They only remember that it was so much fun, they just had to do it again. Meets were held again in the spring of 1974, fall of 1974, spring of 1975, and the fall of 1975.

In 1976 due to the expansion of the program statewide, the Huron Valley Interscholastic Horsemanship Association became the Michigan Interscholastic Horsemanship Association. On May 16, 1976 the first MIHA State Championship at Oak Ridge Stables in White Lake Township, with nearly 600 spectators. Winning the State Championship in 1976 was Romeo.

Also instrumental in those early days were Chuck Schroder and Gerald Fuller, the Milford and Hartland coaches. In 1975, Brighton, coached by Wanda Keech, and Pinckney, coached by Virginia Bennett joined the competition. Also joining in 1975 were teams from New Haven, Romeo, Almont, Oxford, Fowlerville, South Lyon, Novi, Northville, and Lakeland. Most of these schools are still competing today.

Wanda Keech, served as State Chairman, and Virginia Bennett served as Vice-Chairman, during the MIHA’s fledgling years. Other past State Chairmen are Bob Kibbie, Phil Tietsort, and Larry Flanary.

By 1978, the MIHA had grown so much it was necessary to divide the schools into “A” division teams (with ten or more riders), or “B” divisions teams (with less than ten riders). At the MIHA State Championship held in 1978 at Mason, South Lyon won the “A” division and Port Huron won the “B” division that year.

In 1983, Jean Husted became the State Secretary and served until 2004. Other long serving executive board members include Annette Thelen (Treasurer, Vice-Chair, and Jr. Steering Committee) and Bill Tingley (Vice President). By 1984, the MIHA had grown to six districts with 678 riders competing statewide. By 1987 the MIHA had 11 districts with 935 riders competing on 120 teams. In 1992, a “C” division was added for teams with five or less riders.

In 1994 the M.I.H.A. had 14 districts with 173 teams and 1118 riders.

In 2004, the M.I.H.A. started a pilot program for a Junior division for riders in sixth through eight grades. The Junior division became a formal part of the M.I.H.A. in 2006. What a great way to prepare our future high school riders.

By 2005, the M.I.H.A. had 2146 riders on 327 teams in 19 districts. The M.I.H.A. State Championships had out grown all available facilities, so it became necessary to add a Regional competition to decrease the size of the State show. The first Regional competitions were held in 2005 at five locations. In 2006, a “D” Division was added for teams with 2 or less riders. In 2017, we added 5th graders to our membership.

M.I.H.A. STATE CHAMPIONSHIP SHOW STAFF

M.I.H.A. CHAIRMAN.....	Michael Yanz
STATE SHOW CHAIR.....	Marc DeLisle
OFFICE MANAGERS.....	Lauren Fetner & Brian Bode
OFFICE STAFF.....	Candiac Russell & Stacie Bode
SCORE KEEPER.....	Brian Bode
JUDGING MANAGER.....	Marc DeLisle
RING STEWARDS.....	Too many to list
PADDOCK MASTERS.....	Mark Krull & Drew Abbot
ANNOUNCERS.....	Erin McCarthy, Curtis Gear & Torrie Yanz
COMMUNICATIONS.....	Mike Yanz
SET CREW.....	Various Volunteers
PRE-SHOW PREP.....	Exec-Board & Office Staff
JUDGES SCRIBES.....	Various
JUMPING EQUIPMENT.....	Melissa Griffin, HHH Riding Stable

**Thank you to district six for providing all of the show equipment.
Your service is greatly appreciated!**

SHOW SERVICE PROVIDERS

EMT.....	Teresa Robinson.....	On Grounds
VETERINARIAN.....	Dr. Robert Renton.....	517-404-3400
FARRIER.....	Mark Draves, On Call.....	989-424-0044
CATERER.....	Shirlenes Cuisine.....	989 631 8750
PRINTER.....	Spartan Printing.....	517.372.6910
JUMPS DONATION.....	Melissa Griffin, HHH Riding Stable	
GOLF CARTS.....	Titan Golf Carts.....	989-697-3080
TRAIL COURSE.....	Marlana Barkow	
PHOTOGRAPHERS.....	Wiesler Photography.....	734 652 9977
VIDEO STREAMING.....	Brian Bode, Secant Technologies	
FLAG DEDICATIONS.....	District 12	

VENDORS

Michigan State University Equestrian Team, Crestview Tack Shop—Sportsmanship Trophy Sponsor, Diamond K Show Clothing, Sliding S Ranch, Western Spirit, Ellie May's Concessions, Cowboy Cuisine, Bemer Therapy

Lighthouse Exclusive MIHA Apparel
www.lighthousesportswear.net
lighthousesportswear@msn.com

Congratulations and good luck to District 8 Region D participant's heading to state

Division A Chippewa Hills and Morley Stanwood

Division B Big Rapids



Abigayle Hosking, Tori Snyder, Matt Simon, Sage Cole,
Sidney Potts, Jacee Kolarick-Ranger
Coaches Lisa Stickler, Cheryl Holbeck,
Candace Stickler



Acea Smith, Matalyn Rorabaugh, Jaidyn Schmitt, Riley Pritchard,
Hayley Holliday, Simone Amato, Destiney Covey, Jason Benson,
Paige Larson, Ryleigh Newton
Coaches Tiffany Spedowski, Kaci Garver, Zoey Lambrix,
Andria Snavley



Evan Bowen, Abby Shelton, Jenna Hatchew, Hanna Brock,
Avery Chaput, Nadine Page, Emily Cooley
Coaches Katey Lattimore and McKenzie Gilbert

CODE OF CONDUCT

Parents, spectators, and coaches are not allowed in the arenas at any time during competition. Show staff are there to facilitate the show. They will do their best to get you in to the ring to show your horse. Ultimately, it's your responsibility to get there. Any abuse of show staff could jeopardize you or your team at the show. It will not be tolerated.

Parents, spectators, riders, and coaches shall not approach or communicate with the Judges at any time. Only the show staff shall be permitted to communicate with the Judges.

ONLY A COACH etc. (with proper ID) CAN DROP OR ADD CLASSES.

Only a coach can file a protest. MIHA 2010 Rule Book, pg 23 Article XIII, J. Protest must be made in writing and turned into the show office. Show Staff will communicate with the Judge(s) regarding the protest.

Parents, spectators, riders, and coaches shall not communicate with the Announcers while a class is running.

Tack/Apparel inspections are for your convenience. They allow the winner to win on their own merit and not be disqualified for a missing or inappropriate item. Just because it made it past Districts and Regionals doesn't mean its correct. Please don't assume so.

No coaching from the sidelines by parents or spectators.

No Riding DOUBLE or with just a HALTER-Leadstrap at anytime

Conduct of Riders, Parents, Guest Smoking, Alcohol, Foul Language, Unsportsman like conduct or Mistreatment of any animal will not be tolerated. MIHA 2010 Rule Book, Pg 21 Article XII, G, 1, 2, 3, K

Please be respectful of the show grounds. Please adhere to the Midland County Fairground rules found in this booklet. Help keep the grounds clean.

BE ON TIME!!! We will not hold a class for you.

******IF YOU MISS YOUR GO IN CLASS ORDER YOU WILL NOT BE PERMITTED TO GO INTO YOUR CLASS. YOUR SLOT IS FORFEITED. You are allowed to switch only with your teammates. Please alert gates staff of this action. Remember, if you aren't part of the solution, then you are part of the problem. NO EXCEPTIONS!!!!**



MIDLAND COUNTY FAIRGROUND RULES

These are Fairground rules and they will be enforced:

DOGS OR COMPANION ANIMALS Dogs will be allowed in the ***CAMPING AREA ONLY!!!*** Anyone with a dog in an area other than the Camping area will be expelled without refund. NO EXCEPTIONS!!!! Please don't force us to Ban all dogs again. ***DOGS OR COMPANION ANIMALS OF ANY KIND WILL REMAIN IN CAMPING AREA ONLY!!!!*** Please clean up after your Dogs/Animals in the Campgrounds.

THE ONLY THING TO BE LEFT IN THE HORSE STALLS ARE SHAVINGS AND MANURE! No straw, Styrofoam, wood pellets, artificial bedding, or trash are to be left in the stalls. Violators will be fined \$75.00.

NO STAPLES OR NAIL ON STALLS OR IN BARN! Feel free to decorate you stalls, but do not use staples or nail in the barns or anywhere on the grounds.

NO HORSES ON THE GRASS or in CAMPGROUNDS!! No riding, lunging, or even walking your horse on any grass area or in the campgrounds. If you are caught with your horse on a grassy area, you will be expelled from the show ground. Please clean up after your horse.

CAMPING IN CAMPSITES ONLY! NO HORSES!! Do not plug into barns or other buildings when camping. Please do not park empty trailer or vehicles in campsites. Park in designated areas only. *Water is NOT guaranteed for any camping spot.*

CLEAN UP AFTER YOURSELVES! Please clean up after yourselves and your horses. All decorations must be completely removed.



2018 TENTATIVE SHOW SCHEDULE

We say tentative because it is subject to change at any moment. Our plan is to start the show at 8:00 a.m. and continue through the classes listed for that day. However, certain factors may speed up or slow down the start times for some of the classes. For example, if the show runs faster than expected, then the classes will start earlier than listed on the tentative show schedule. Likewise, if the show runs slower than expected, then the classes will start later than listed on the tentative show schedule. Other conditions may speed up, slow down, or alter our schedule as well. Please keep track of how the show is running, listen for announced schedule changes or splits, and be flexible. Your help and understanding will keep your show running more smoothly. The announcers are a convenience not a requirement. Pay attention to the class order and classes prior to yours. It may be helpful to have a coach/parent posted near the arena's to pay attention to the running of the current classes.

General Information

- If a class Order of Go is used, Order of go lists will be given to each coach. You **MUST GO IN ORDER**. You can switch with a fellow teammate but there are **NO** other exceptions. If you **MISS** your order, you **MISS** your class **AND** your **SLOT** is Forfeited.
- Riding in covered (between barn 39/36) arena from 5:00 am – 10:30pm
- Please be courteous to disciplines that have upcoming classes in makeup arenas
- No riding warm-ups during Showmanship classes. Speed warm-ups should be before or during their classes. Please limit your pleasure riding during that time.
- Riding in indoor & outside arena's 6:00 am – 7:00 am
- Riding in indoor & outside arena's after classes are done for the day
- Indoor & outside arena closed at 7:00 am for arena prep, drag & set-up
- All arena / barn lights out at 11:00pm each night
- **NO RIDING DOUBLE** or with just a **HALTER** at any time
- We highly encourage use of both numbers on both sides of your pad during any riding classes.

Lunging Information

- Indoor and outside arenas 5:00 am – 6:00 am
- Lunging in round pens all day (please 15 minute time periods)

Jumping Information

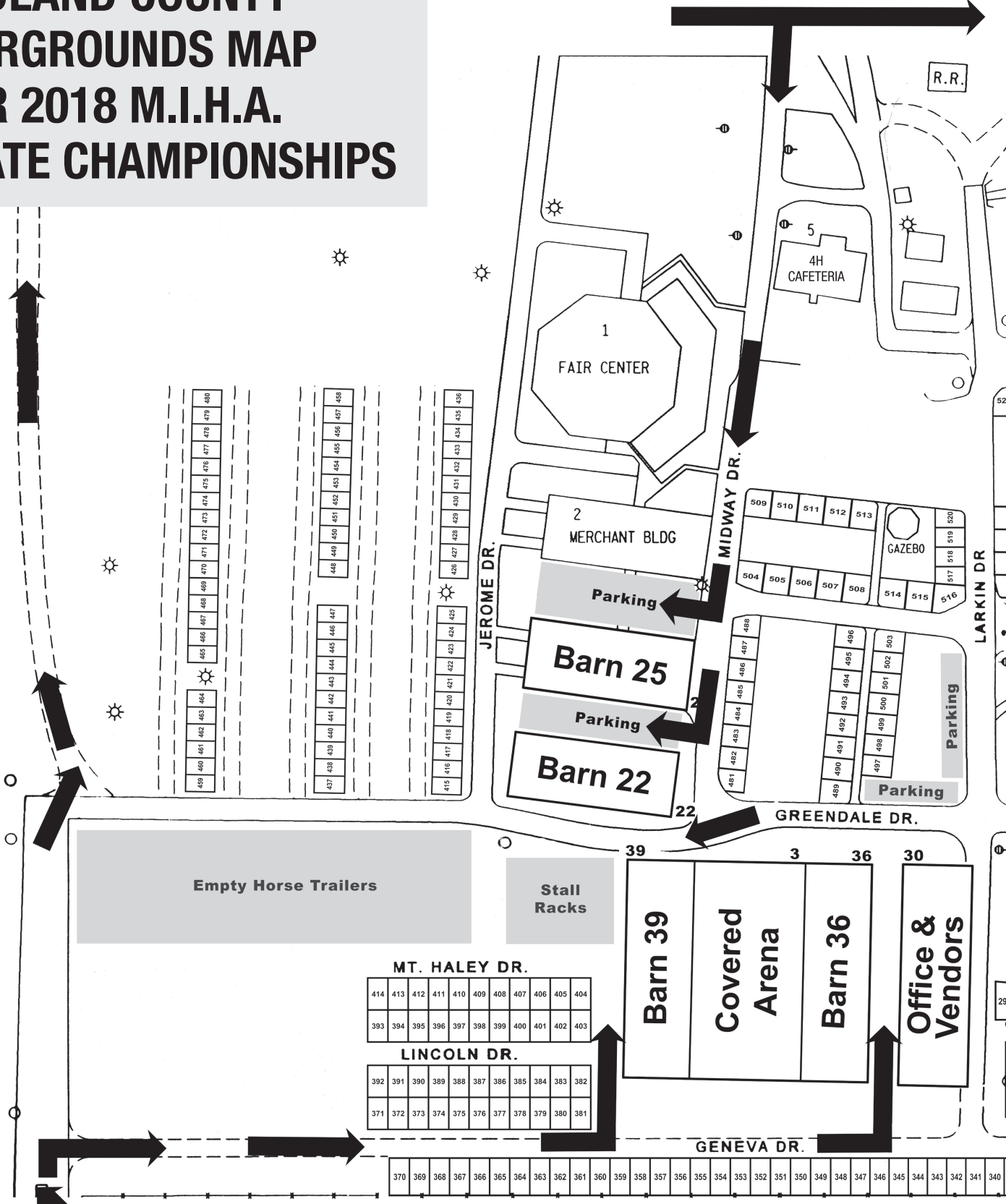
- Warm up of jumpers in the covered arena before open jump practice in the indoor arena please. See schedule for jumping.

Annual Sportsmanship Award — Sponsored by Crestview Tack

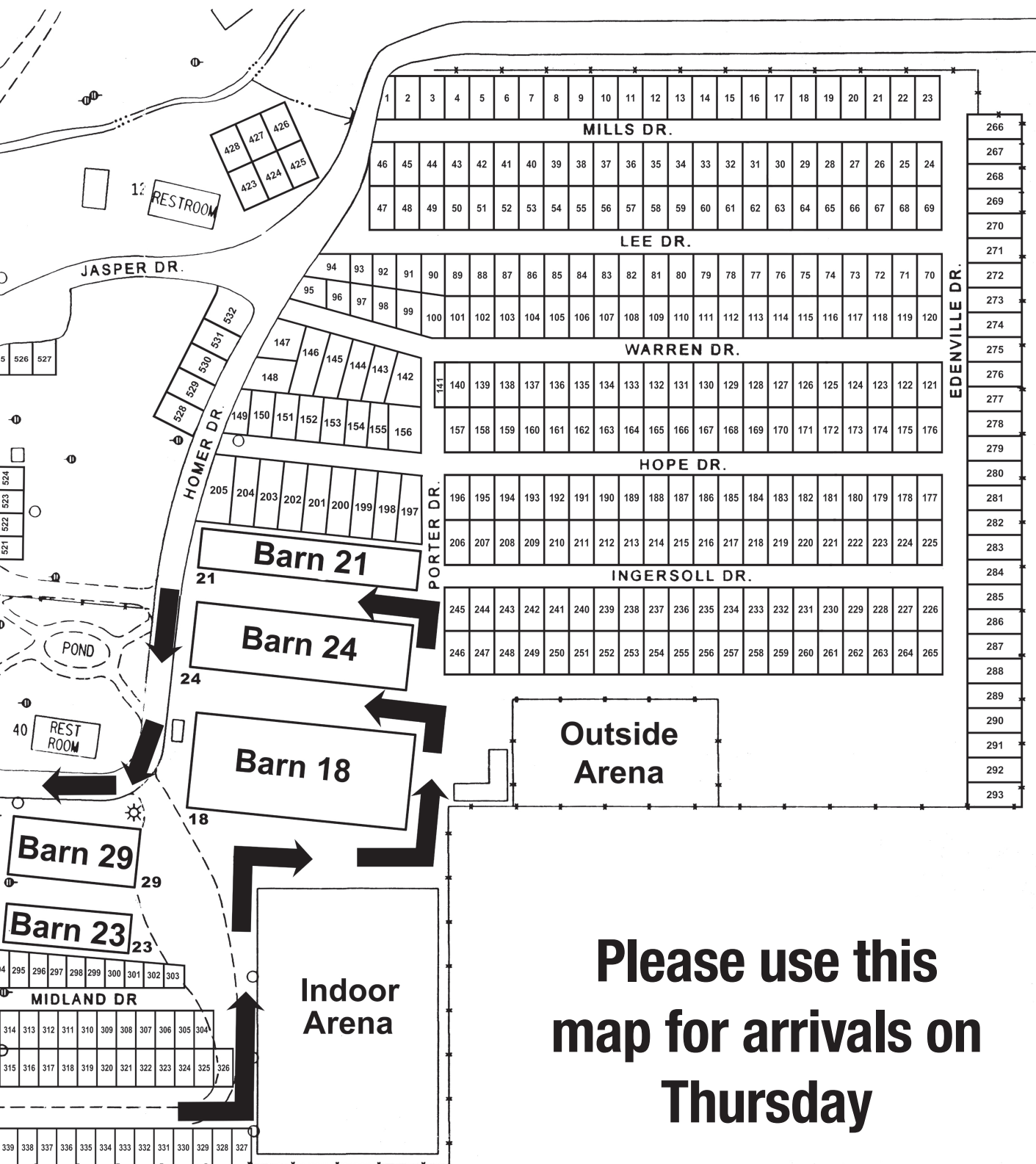
- We have added the **Annual Sportsmanship award**. This award will be given to the exhibitor the displays the greatest amount of sportsmanship at the State Finals. Each team head coach, board of director in attendance and executive board member will receive ballot. Said head coach, BoD and executive board member can nominate anyone except those on your team or who you have direct/indirect affiliation with. So during the show please keep your eyes peeled for that one special MIHA young adult that truly exemplifies true sportsmanship. Ballots will be collected throughout the show but are due by Saturday night.

MIDLAND COUNTY FAIRGROUNDS MAP FOR 2018 M.I.H.A. STATE CHAMPIONSHIPS

To Barns 22 & 25 & Camping



Airport Road Entrance



**Please use this
map for arrivals on
Thursday**

MIHA State Championship Show Schedule

Day	Time	Location	Event	Division/Order
THURSDAY	7:00 to 11 AM	Fairgrounds	TEAM ARRIVAL Use Airport Rd gate (US-10 service drive)	ALL Cars, Trucks, Trailers, Campers
	11:30AM – 12 PM	Outside	Trail Walk Through (Per Rulebook)	All Divisions
	Noon	Behind Main Office	Coaches Meeting	All Divisions
	1:00 PM	Outside	Trail	A, B, C, D
	Noon to 12:40	Indoor	Open jump schooling	Division A
	12:40 to 1:10	Indoor	Open jump schooling	Division B
	1:10 to 1:40	Indoor	Open jump schooling	Division C & D
	2:00 PM	Indoor	Equitation Over Fences	D, C, B, A
	5:30 PM	Indoor	Flag Race	C, B, D, A
	5:00 PM	Outside	Western Reining	D, A
	30 Minutes after last class 30 Minutes after Opening Ceremonies	Indoor Behind Main Office	Opening Ceremonies Coaches Meeting	All participants All Coaches

Day	Time	Location	Event	Division/Order
FRIDAY	8:00 AM	Indoor	Western Fitting & Showing	A, D on North B, C on South
	9:30 AM	Indoor	Huntseat Fitting & Showing	A, D on North B, C on South
	11:00 AM	Indoor	Saddle Seat Fitting & Showing	A, D on North B, C on South
	NOON	Indoor	Saddle seat Equation Saddle seat Bareback	B, C B, C
	NOON	Outdoor	Saddle seat Equation Saddle seat Bareback	A, D A, D
	4:30 PM	Outside	Western Reining	B, C
	5:00 PM	Indoor	TIMED EVENT (Keyhole)	A, D, B, C
	30 minutes after last class	Behind Main Office	Coaches Meeting	All Coaches

MIHA State Championship Show Schedule

Day	Time	Location	Event	Division/Order
SATURDAY	8:00 AM	Indoor	West. Equitation West. Bareback	B, C B, C
	8:00 AM	Outside	West. Equitation West. Bareback	A, D A, D
	11:00 AM	Indoor	Huntseat Equitation	A, B, C, D
	12:30 PM	Outside	Huntseat Bareback	A, B, C, D
	4:30 PM	Outside	Saddle seat Pattern	A only
	5:00 PM	Indoor	Cloverleaf	D, C, B, A
	30min after last Class After Coaches Meeting	Stands of Main Arena Behind Main office	Coaches Meeting PIZZA PARTY! All Participants	All Divisions All Coaches

Day	Time	Location	Event	Division/Order
SUNDAY	8:00 AM	Outside	Saddle Seat Pattern	C, B, D only
	9:00 AM	Indoor	2-Man Relay	A, C, B, D
	30 min after last run	Indoor	Closing Ceremonies	All Divisions

HOTELS/MOTELS IN MIDLAND, MICHIGAN:

THE SLEEP INN
2100 W. Wackerly St.
Midland, Mi 48640
Ph: 989. 837.1010

HAMPTON INN
6701 Eastman Ave
Midland, MI 48642
Ph:989.837.4000
/800.426.7866

BEST WESTERN PLAZA RESORT
5221 Bay City Rd
Midland, MI 48642
Ph: 989.496.2700
/800.825.2700

SPRING HILL MARRIOTT
520 Joe Mann Blvd
Midland, MI 48642
Ph: 989.837.2700

BAYMONT INN
2200 W. Wackerly St.
Midland, MI 48640
Ph: 989.631.0070
/800.422.2744

MIDLAND RESORT
1500 W. Wackerly St.
Midland, MI 48640
Ph: 800.622.4220

THE H HOTEL
111 W. Main Street
Midland, MI 48640
Ph: 989. 839.0500

HOLIDAY INN
810 Cinema Dr
Midland, MI 48642
Phone: 989 794 8500

MIDLAND MOTOR HOTEL
1815 S. Saginaw Rd.
Midland, MI 48640
Ph: 989.631.0570
/800.866.3393

SUBURBAN HOLIDAY INN
810 Cinema Drive
Midland, MI 48640
Ph: 989.794.8500

SPRINGHILL SUITES
800 Joe Mann Blvd
Midland, MI

DAYS INN
5217 Bay City Rd
Midland MI

DIVISION "A" TEAMS

A - Caledonia

Head Coach Kim Merwin
Assistant Hannah Cox
Assistant Kellie Cronin
Assistant Brandy Humphrey
Assistant Kelly Merwin
Assistant Meagan Nummer
Assistant Zach Schidel
511 Mikala VanderBand
525 Mia Stiver
608 Remi Steenwyk
638 Carlee Gibson
648 Lauren Kim
687 Anna Olsen
690 Amelia Moody
694 Kiara Swanson
705 Weston Hattey
709 Kira Bosco
735 Taryn Kooiker
Page 2 of 11
736 Marcia Ball
767 Hanna Gross
800 Sophia Lentine

A - Chippewa Hills

Head Coach Lisa Stickler
Assistant Cheryl Holbeck
Assistant Candace Stickler
562 Sage Cole
582 Jacee Kolarik-Ranger
587 Cember Bukovinszky
609 Romane Marie Maraval
640 Tori Snyder
669 Abigayle Hosking
676 Mikael Bukovinszky
679 Matt Simon
697 Braffley Simon
772 Sidney Potts

A - Coopersville

Head Coach Betsy Buist
Assistant Laura DeHaan
Assistant Rebecca Priesner
Assistant Ashley VanHouten
521 Weston Meekhof
528 Sophia Umlor
534 Leah Russell
538 Emma Young
553 Brenna Llyod
557 Jaedyn Russell
596 Andrea Ziebarth
605 Abby Schuling
626 Andrea Serba
692 Taylor Maxwell
722 Jolie Stanton
740 Savannah Conran
758 Clair Clinger

A - Deckerville

Head Coach Julie Shubel
Assistant Carrie Gillis
518 Alexa Roberts
581 Anna Marie Forton
584 Hannah Rich
620 Ava Pink
625 Nicole Dyda
658 Luis Cambronero
704 Cassidy Franzel
721 Justin Shubel
810 Bette Eggink
824 Tori Gillis

A - Lakeland

Head Coach Nicole Best
Assistant Abbi Hill
Assistant Melinda Hyde
Assistant Natalie Sulkowski
568 Brooke White
645 Brianna Wing
650 Katie White
659 Lilly Morgan
706 Isaac Layman
708 Charley Simpson
768 Gillian James
Page 6 Of 11
776 Jamie Bellor
780 Amber Evans
797 Lydia Jaslowski

A - Lowell

Head Coach Holli Melton
Assistant Kendra Black
Assistant Gina Guiliano
513 Riley Taylor
514 Isabelle Misner
544 Mary Ricards
564 Emma Hancock
612 Oli Miller
660 Ella Limbers
725 Ellie Sandman
729 Eliot Raimer
737 McKenna Grody
745 Kyleigh Rau
749 Lauren (Groom) King
(Groom)
755 Lena Schlientz
771 Bridgett Clay
789 Molly Fredrickson

A - Morley Stanwood

Head Coach Tiffany Spedowski
Assistant Kaci Garver
Assistant Zoey Lambrix
Assistant Connie Schultz
Assistant Andrea Snavley
577 Simone Amato
601 Matalyn Rorabaugh
611 Riley Pritchard
627 Paige Larson
663 Acea Smith
712 Jason Benson
715 Hayley Holliday
784 Jaidyn Schmidt
796 Destiney Covey
802 Rileigh Newton

A - Oxford

Head Coach Dee Sheppard
Assistant Jennifer Fifield
Assistant Jenney-Ayn Gill
Assistant Jacquelyn Kubina
Assistant Kellie Roth
Assistant Shannon Trezil
Assistant Kaitlyn Trezil
515 Kylie Ossege
533 Julianna Miller
547 Makayla Haywood
653 Zanna Sayeau
682 Olivia Dorman
711 Riley Hodder
714 Emerson Lantz
747 Maddi McMullen
777 Hailey Boger
786 Elyssa Main
798 Emily Vandenberghe

A - Perry

Head Coach Monica Edington
Assistant Malisa Boggs
Assistant Connie Hohman
Assistant Louri Miller
Assistant Kenda Robinson
549 Morgan Chamberlain
552 Isabella Miller
571 Jaden Chamberlain
607 Olivia Miller
619 Mackenzie Boggs
621 Symantha Clark
629 Haylee-Ann Koc
728 Macie Slee
731 Maddie Daenzer
762 Kennedee Robinson
820 Zoe Hohman

A - Shepherd

Head Coach Jenny Bigalow
Assistant Whitley Jackson
546 Natalie Seabuger
551 Skylar Spickerman
585 Skylar Ames
594 Rachel Bigelow
599 Erika Janetski
618 Meghan Schutt
636 Elizabeth Moegeburg
684 Gabrielle Noreen
805 Rebecca Bryant
818 Paige Schutt 690 Amelia B

DIVISION "B" TEAMS

B - Bay City Western

Head Coach Tonya Kuizenga

Assistant Arlene Koenig

Assistant Jeff Sharp

540 Sydney Cianek

573 Madison Horner

671 Lauryn Leuenberger

723 Kiana Johnroe

754 Elizabeth Pearce

764 Oliva Kuizenga

809 Janna Kuthe

B - Big Rapids

Head Coach Katey Lattimore

Assistant Amber Erbes

509 Jenna Hatchew

522 Hanna Brock

543 Avery Chaput

565 Emily Cooley

668 Nadine Page

750 Evan Bowen

766 Abby Shelton

B - Bullock Creek

Head Coach Madeline Welch

Assistant Shelly Armstrong-Miller

Assistant Courtney Arnold

Assistant Stacy Gaffke

502 Aliyah Spangler

504 Ella Gaffke

520 Emerson Gaffke

531 Dominic Wagner

617 Tanner Edwards

623 Christina Wittke

649 Miranda Smith

717 Renna Brown

B - Goodrich

Head Coach Christina

DeSota

Head Coach Nathanael

DeSota

575 Curtice DeSota

579 McKenzie Melosh

597 Cassidy Bartkowiak

637 Aubrey Stockwell

734 Carmen Gonzalez

738 Ellie Johnson

814 Cate DeSota

B - Hopkins

Head Coach Sue Snoeyink

Assistant Laura Roys

575 Curtice DeSota

579 McKenzie Melosh

597 Cassidy Bartkowiak

637 Aubrey Stockwell

734 Carmen Gonzalez

738 Ellie Johnson

814 Cate DeSota

B - Ludington

Head Coach Doyle Fenner

Head Coach Tanya Walter

Assistant Janelle Beaver

Assistant Lynne Bennett

Assistant Meghan Gillies

Assistant Chesney Griffis

Assistant Alyssa Walter

524 Garrett Bennett

535 Carley Hindman

566 Evan Bennett

643 Brianna Hindman

678 Ella Wickham

B - Mason

Head Coach Jennifer Baker

Head Coach Cory

Mccormick

507 Elyssa Starnes

580 Ashley Baker

647 Ellie Dys

662 Jordan Mccowan

681 Grace Edick

739 Maggie Silcox

B - Notre Dame Prep

Head Coach Theresa Schmid

Assistant Stephanie Bean

Assistant Angela Fitzgerald

Assistant Sue McGinnis

Assistant Gina Urban

506 Olivia Urban

541 Grace Parker

604 Colette Bockrath

655 Cara DeFelice

667 Maegan Fitzgerald

726 Kendall Lance

B - Port Huron Northern

Head Coach Erin Skuta

Assistant Stacy Sills

Assistant Kylee Skuta

589 Hailey Gross

602 Kylie Williams

630 Valerie Harvey

698 Sydney Caldwell

713 Kylie Gayette

742 Selena Mertz

756 Hannah Huntsberry

794 Katie Huntsberry

B - Zeeland West

Head Coach Elisa Mahiele

Assistant Jack Geerlings

Assistant Jessica Headley

542 Trista Scholten

563 Taylor Johnson

572 Ashley Brower

576 Zoey Hassevoort

822 Jenna Naber



GOOD LUCK, TO ALL THE COMPETITORS!

 **SPARTAN**
Printing & Promotional Products

15551 South U.S. Hwy 27 | Lansing, Michigan 48906
P 517.372.6910 | F 517.372.0322 | printspartan.com

DIVISION “C” TEAMS

C - Alma

Head Coach Lynn Munger

Assistant Shelly Cary

Assistant Mikayla Mallery

Assistant Michelle Mallery

Assistant Ali Munger

527 Anna Munger

532 Hayley Cary

593 Jaidyn Butcher

699 Julayne Butcher

C - Bridgman

Head Coach Ali

Reifschneider

Assistant Cathy

Reifschneider

Assistant Shannon Smith

530 Naomi Nimtz

574 Kristian Dalton

595 Lauren Kemp

642 Autumn Brown

702 Samantha Rydwelski

C - Capac

Head Coach Linda Taylor

Assistant Cristie Ebner

550 Trinity Crawford

631 Luke Kalil

744 Emma Kalil

757 Abigail Ebner

C - Caro

Head Coach Grant Gettel

Assistant Troy Daily

539 Angela Daily

628 Emily Titus

685 Alyssa Fountain

C - Catholic Central

Head Coach Danielle

Ouedag

Assistant Sam Bonnema

Assistant Becky Fry

558 Ben Kortz

613 Grace Strong

657 Allie Ouendag

724 Michaela Patrick

C - Gaylord

Head Coach Taylor Harding

Assistant Diana

Donajkowski

Assistant Stacey Holzschu

508 Sara Harvey

512 Arika Pollaski

610 Rylee Harding

C - Grand Haven

Head Coach Jo Ann Kosanic

Assistant Tom Kosanic

Assistant Geena Kosanic

686 Hannah Smith

703 Paige Beland

763 Ani Fett

793 Sara Sokoly

812 Ashlyne Mckee

C - Howell

Head Coach Brittney Mathes

Assistant Cassie Noble

615 Alaina Madison

675 Wyatt Barber

807 Clara Jackson

C - Rockford C

Head Coach Lori Prince

Assistant Hailey Harju

Assistant Ann Thome

Assistant Stephanie Williams

548 Lillian (Lilly) Veltema

591 Abby Tichelaar

616 Helena Cary

691 Johanna Bailey

C - Tri County

Head Coach Amanda Wall

Assistant Joann Pyle

664 Kennedy Semposki

677 Zoe Pyle

700 Emily Walkowski

770 Megan Walkowski

790 Kendra Sherman

DIVISION “D” TEAMS

D - Bay City Central

Head Coach Rebecca

Baranski

791 Amelia Baranski

D - Breckenridge

Head Coach Kim Sanger

Assistant Kailia Sanger

Assistant Allen Sanger

778 Kira Sanger

D - CMH Home School

Head Coach David Hadfield

Assistant Tammy Schill

503 Courtney Hadfield

D - Dewitt

Head Coach Terilynn Noyce

635 Alyssa Luzkow

D - Grand Blanc

Head Coach Dora Johnson

Assistant Dave Johnson

641 Alyssa Ethington

774 Madison Johnson

D - Grosse Ile

Head Coach Ricki Luton

Assistant Rob Luton

Assistant Kelly Toporek

781 Ava Toporek

819 Julia Winter

D - Hart High School

Head Coach Tara Demarr

Assistant Amanda Coker

526 Landry Tate

665 Tressa Swihart

D - Imlay City

Head Coach Chris Campbell

Assistant Cathy Campbell

Assistant Larry Kohler

Assistant Erica Stroman

733 Ann Mills

806 Breanna Ngow

D - Michigan Lutheran

Head Coach Nicole Buyce

Assistant Tracy Clare

710 Evie Clare

D - Union City

Head Coach Shelly Holt

748 Rachel Bowers

M.I.H.A. STATE CHAMPIONSHIP “THANK YOU”

The MIHA is run by volunteers. The service the volunteers provide is “priceless” because the MIHA program would not run without our volunteers. If the MIHA had to pay all of the volunteers what their service is worth, it would not be able to afford the costs. We wish to thank each and every District Chair, Regional Chairs, coaches, gate keeper, announcer, ring master, set crew, and office worker who helped with our shows this year including District Meets, Regional and the State Championship.

The MIHA would like to thank all of those who took on the task of running our association on a daily basis. Those who volunteer and listen patiently to the parents, students and other volunteers with their many helpful suggestions and concerns, please accept our heart felt **Thank You!**

THANK YOU REGIONAL CHAIRPERSONS:

Region A – Brian Bode – District 3, 15, 16, 19

Region B – Lauren Fetner – District 1, 11, 12, 14

Region C – Hidi Morford – 5, 6, 13, 17

Region D – Doyle Fenner – 8, 9, 18, 20

Region E – Candice Russell– 2, 4, 7, 10

THANK YOU DISTRICT CHAIRPERSONS:

District One – Roxanne Sanders

District Two- Karen Logan

District Three - Lisa Crowder

District Four - Kelly Collison

District Five - Candice Russell

District Six - Arlene Koenig

District Seven - Myra Zolynsky

District Eight - Tiffany Spedowski

District Nine - Doyle Fenner

District Ten - Bill Miller

District Eleven – Susan Bannister

District Twelve – Bob Clogg

District Thirteen – Tracee Lentz

District Fourteen - Marie Curell

District Fifteen - Michelle Goshorn

District Sixteen – Steve Luyk

District Seventeen - Hidi Morford

District Eighteen – Jeanna Michalek

District Nineteen – Brian Bode

District Twenty – Casey Butler

2018 M.I.H.A. STATE CHAMPIONSHIP SHOW EVALUATION FORM

Please take a minute to complete and turn in this evaluation form. Please circle your response with 5 being the best and most satisfactory, and 1 being the worst and least satisfactory.

1) How did you like attending the Championships in Midland, Michigan?

5 4 3 2 1

2) Overall quality of Midland County Fairgrounds?

5 4 3 2 1

3) Overall quality of the camping facilities at the Midland County Fairgrounds?

5 4 3 2 1

4) The efficiency of the Office and Show staff?

5 4 3 2 1 or did not deal with show office/staff

5) How friendly and polite was the Office and Show Staff?

5 4 3 2 1 or did not deal with show office/staff

6) How would you rate the show schedule?

5 4 3 2 1

7) If you or your team filed any formal protest, how well did the show committee handle your protest?

5 4 3 2 1 or did not file any protest

8) How timely was the show run each day?

Thursday 5 4 3 2 1

Friday 5 4 3 2 1

Saturday 5 4 3 2 1

Sunday 5 4 3 2 1

9) How do you rate this year's State Championships overall?

5 4 3 2 1

10) Is there anything you would like to see changed for next years Championships? _____

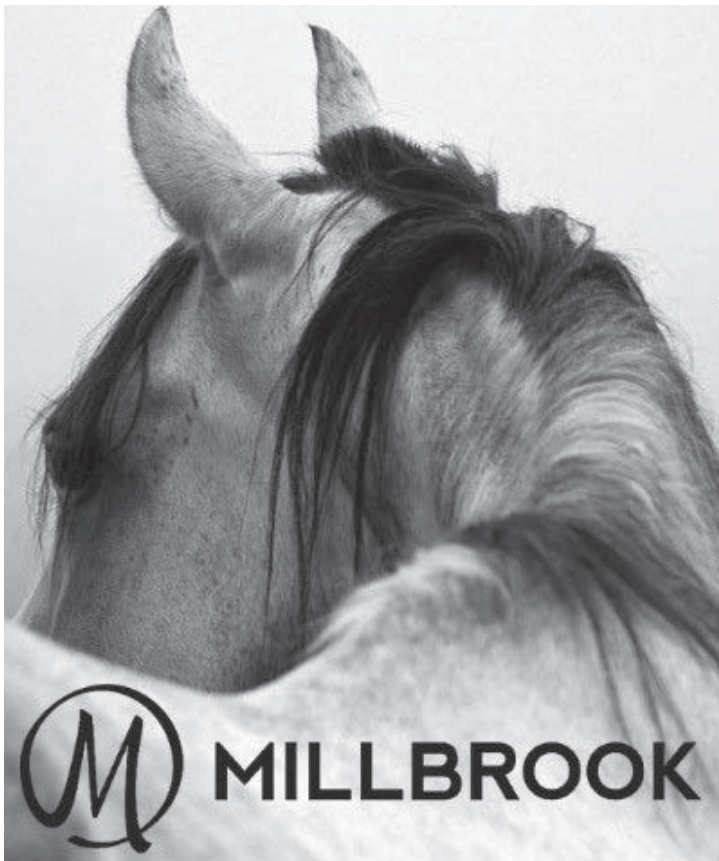
ADDITIONAL COMMENTS: _____



Congratulations District 16 Teams!
Zeeland West, Coopersville, Catholic Central
Best of Luck at State!



Thank you to our parents, friends, families and district for your support!



**CONGRATULATIONS
STATE FINALISTS**

Enjoy 20% Off One Item
Shop in-store or online
code: MIHA18
valid through 11.30.18

Love Freebies and Specials? Scan the code!



510 68th St SW Grand Rapids MI 49548
616.281.0777 | millbrooktack.com

Can't be used with any other offers. Regularly priced, in-stock merchandise only. Excludes saddles & consignment. Tailored Sportsman, Samshield, and Dubarry brands excluded.